



Elm Road, KT3

£875,000

Dexters



Elm Road, New Malden, KT3

A handsome, four double bedroom, semi detached period home. With bundles of potential, character, charm and superb proportions throughout and an exceptionally large garden.

This exceptional house has spacious accommodation throughout, with high ceilings and period features. Large sunny rear garden, the perfect space for summer BBQ's, keen gardeners and kids to play.

On the ground floor, there are three separate reception rooms, including a beautiful front lounge with fireplace and large bay window, sunny rear conservatory, and kitchen ready to extend STPP.

On the first floor, there is a family bathroom and separate adjacent WC, four well proportioned bedrooms, two with wardrobes. Period features and room to extend STPP into the loft and rear of the house.

Conveniently located close to New Malden High Street with it's array of shops, cafes and amenities, as well as New Malden station with fast and frequent links into Central London. The area is well served by fantastic local schools and lovely open spaces.

Features

Four Double Bedrooms
Modernisation Required
Potential To Extend STPP
Period Features
Sought After Location
No Onward Chain

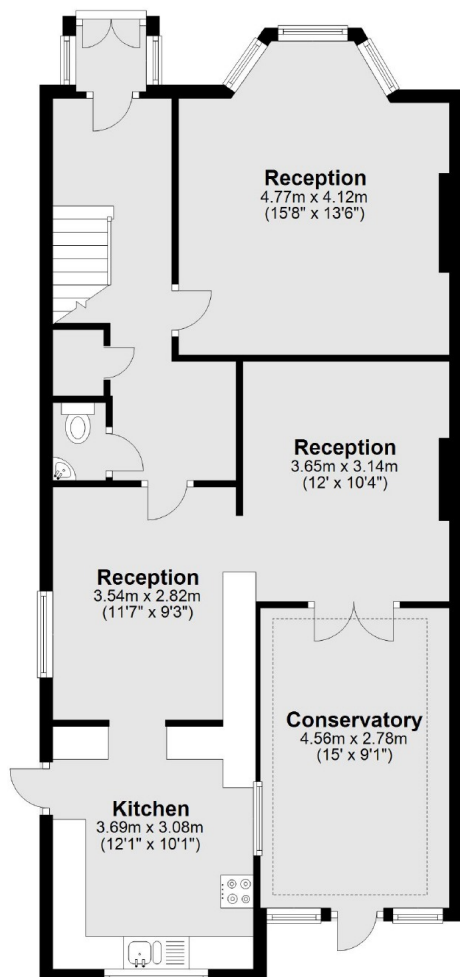




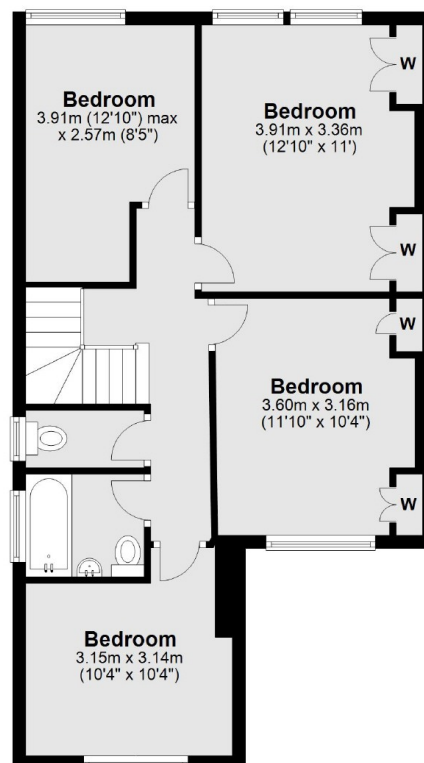


Elm Road, New Malden, KT3

Ground Floor



First Floor



Total area: approx. 132.4 sq. metres (1425.2 sq. feet)

Dexters

Kingston
4 Wood Street, Kingston Upon
Thames, KT1 1TG

Sales
020 8546 3555

Energy Rating: D. We aim to make our particulars both accurate and reliable. However they are not guaranteed; nor do they form part of an offer or contract. If you require clarification on any points then please contact us, especially if you're traveling some distance to view. Please note that appliances and heating systems have not been tested and therefore no warranties can be given as to their good working order.

RICS | Regulated
Estate Agent
and Letting Agent

dexters.co.uk