



## Queens Road, KT2

£495,000

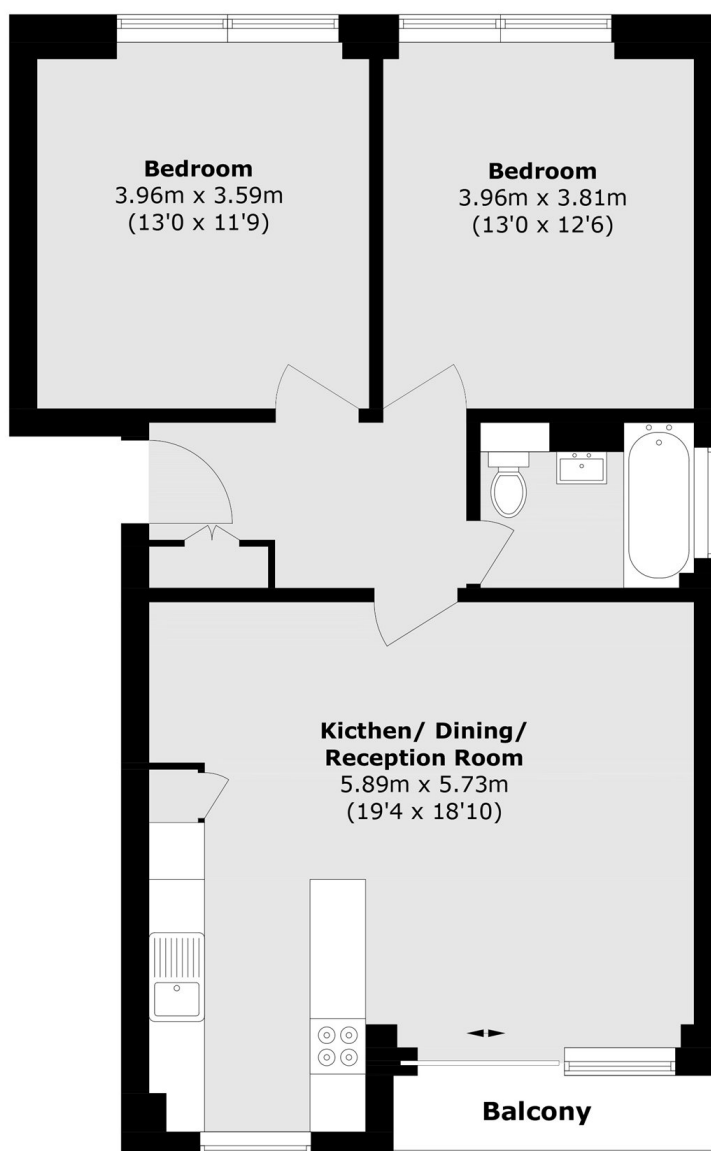
A bright and spacious two bedroom ground floor apartment benefiting from direct access to the communal gardens via a private balcony. The apartment is beautifully presented and features an attractive living room with large sliding patio doors opening onto the balcony. The living space is further enhanced by an open plan arrangement with the smart, modern kitchen, providing ample room for a dining table and chairs and creating an ideal space for both everyday living and entertaining.

Belvedere Court is located on Queens Road, a prime and highly sought after position that leads directly into Richmond Park, renowned for its outstanding open spaces. The apartment is also approximately 500 yards from Norbiton Station and less than a mile from Kingston town centre, offering an extensive range of shopping, dining and leisure facilities.

### Features

- Two Double Bedrooms
- Ground Floor
- Direct Garden Access
- Garage
- No Onward Chain
- Spacious Modern Interior

# Queens Road, Kingston Upon Thames, KT2



Total area (approx.): 70.9 sq. m (763.1 sq. ft)  
Balcony area (approx.): 4.8 sq. m (51.6sq. ft)