



Cambridge Road, KT2

£1,950 Per calendar month

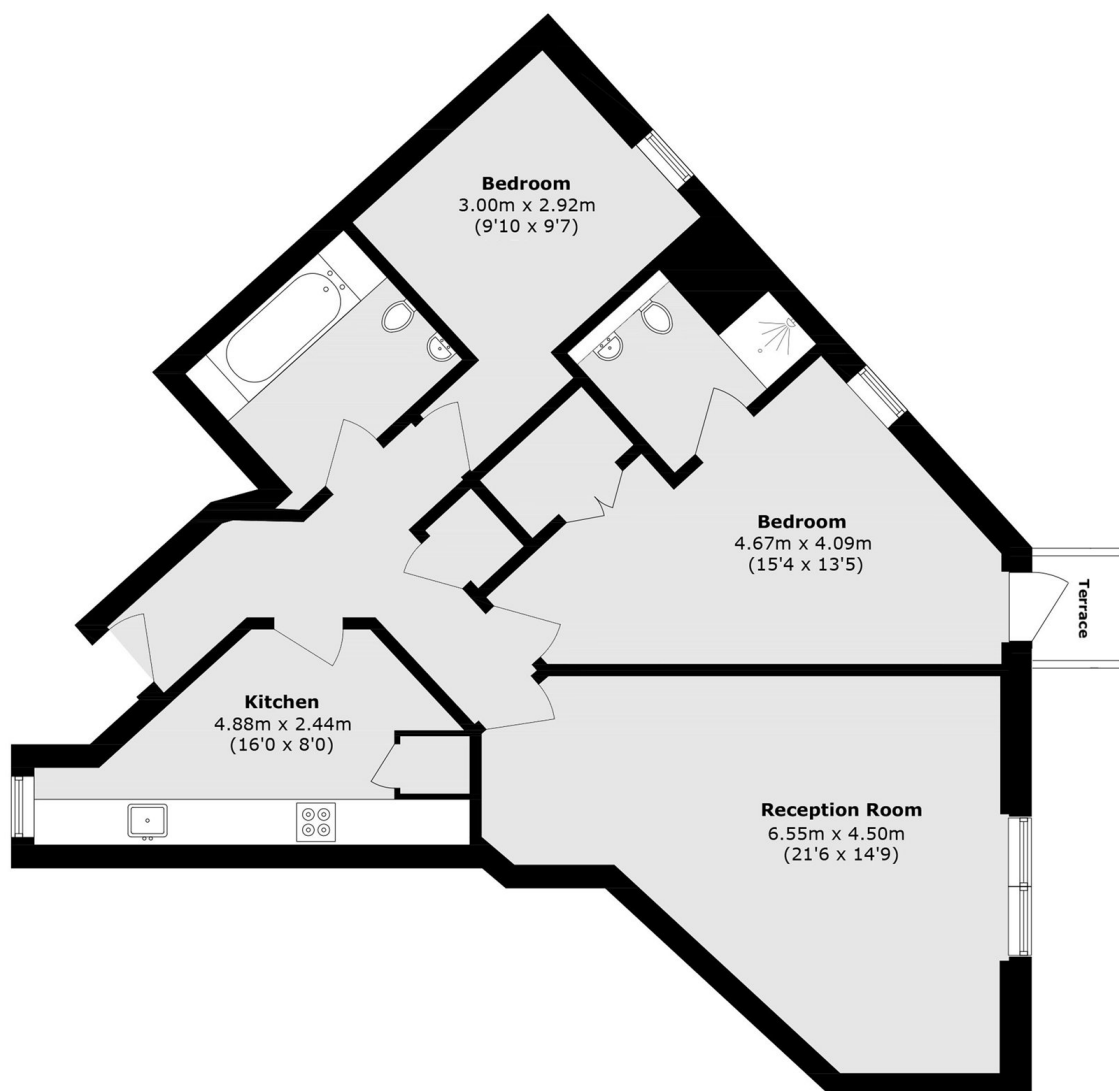
A modern and well presented two bedroom apartment offering excellent living accommodation, a separate fitted kitchen, a principal bedroom with en suite, and convenient access to local amenities and Kingston town centre.

The property is ideally positioned within easy reach of Kingston's extensive selection of shops, bars and leisure facilities, and benefits from convenient transport connections via Kingston and Norbiton stations.

Features

Two Bedrooms
Spacious Living
Separate Kitchen
En suite
Central Location
Allocated Parking

Cambridge Road, Kingston Upon Thames, KT2



Total area (approx.): 75.1 sq. m (808.3 sq. ft)

Terrace area (approx.): 1.5 sq. m (16.1 sq. ft)