



Grayham Road, KT3

£1,100,000

This beautifully presented family home offers spacious and well balanced accommodation arranged over three floors. The property has plenty of off-street parking and a garage at the rear.

Grayham Road is a quiet residential street, situated between Kingston Road and South Lane. A popular area for families and just over half a mile to New Malden High Street, where you will also find the mainline station. There is also easy access to the A3 and Kingston town centre is less than 2 miles away.

Features

- Five Bedrooms
- Two Bathrooms
- Freehold House
- Off-Street Parking
- Fully Extended
- Garage



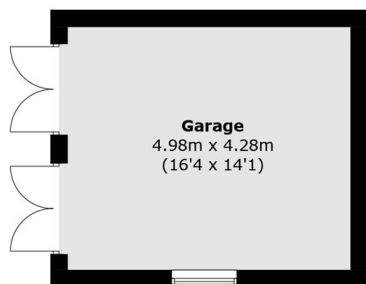
Grayham Road, KT3

A welcoming reception hall with a guest cloakroom leads to a large separate living room at the front of the property. To the rear, a fantastic kitchen/family room forms the heart of the home, featuring stone worktops, a matching island unit and sliding doors opening onto the landscaped rear garden, ideal for both everyday living and entertaining. The ground floor is further enhanced by a separate family room and a practical utility room.

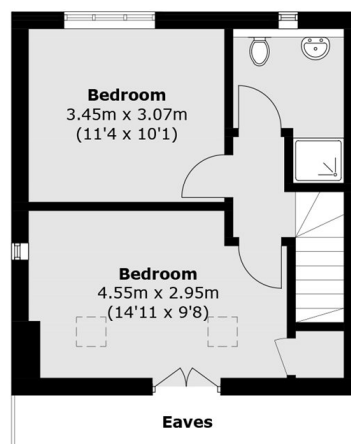
The property offers five well proportioned bedrooms arranged over two floors, served by two luxurious bathrooms, including a contemporary shower room. Outside, the low maintenance landscaped garden provides an inviting outdoor space, while off-street parking and a garage with side access from Grayham Crescent complete this impressive home.



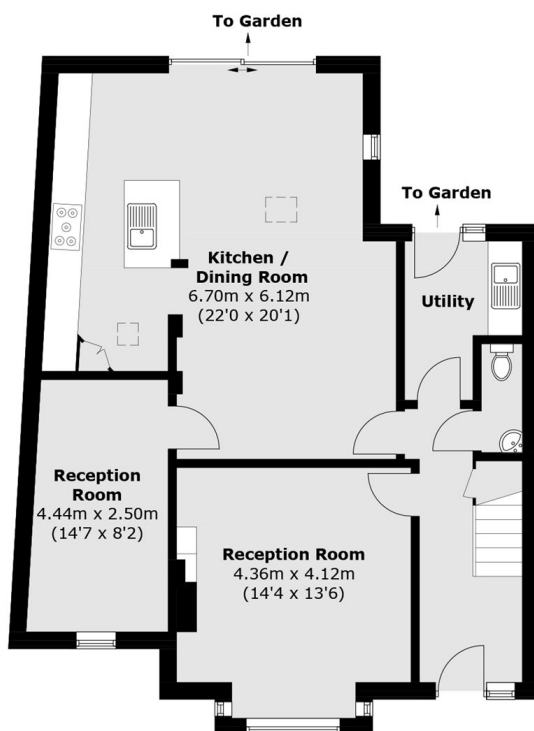
Grayham Road, New Malden, KT3



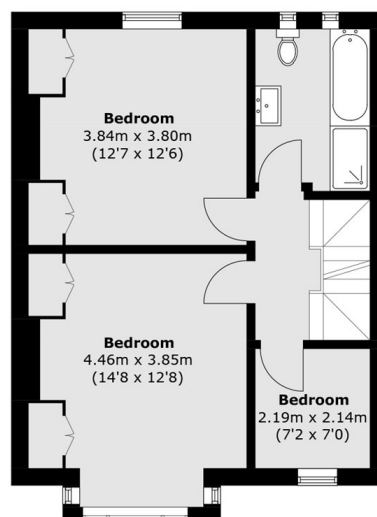
(Not Shown In Actual
Location / Orientation)



Second Floor



Ground Floor



First Floor

Approx Internal Area: 164.5 sq. m (1,770.5 sq. ft)
(Excluding Eaves)
Garage: 21.8 sq. m (234.6 sq. ft)