



Victoria Road, KT1

£550,000

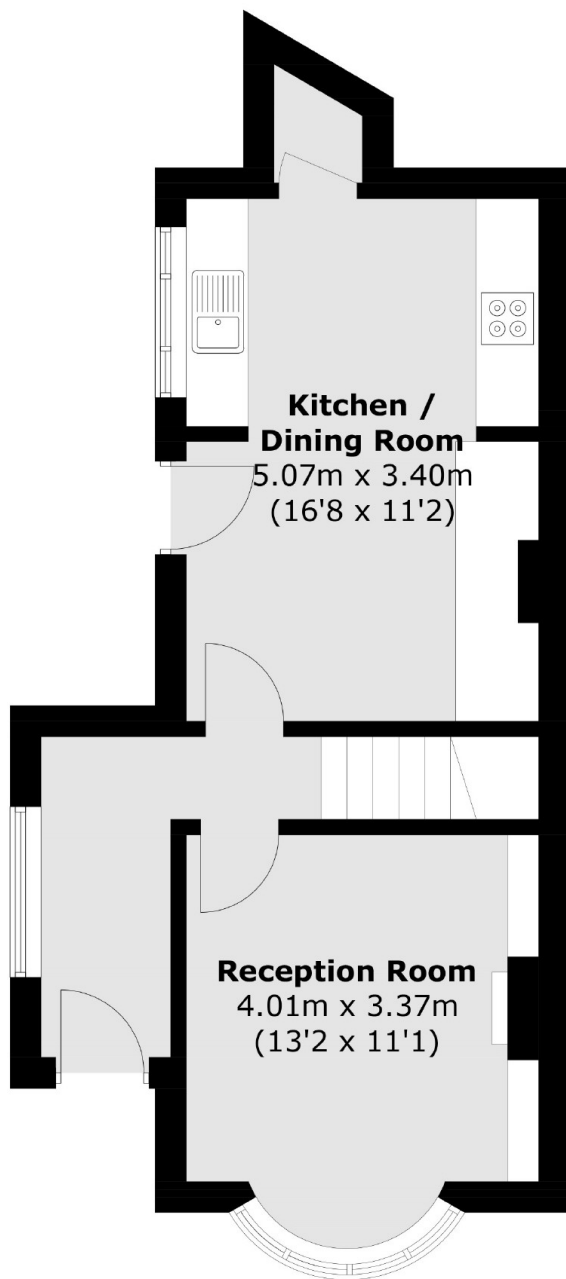
A charming two double bedroom Victorian cottage benefiting from a small side extension, two reception rooms and a smart modern kitchen open plan to the dining area. Beautifully presented and offered with no onward chain, this delightful home combines period character with stylish modern living and features an attractive paved rear garden. A perfect blend of charm and convenience.

Victoria Road is a quiet residential area yet centrally located, just 250 yards from Fairfield Recreation Ground. The vibrant Kingston town centre is only half a mile away, offering an extensive selection of shops, restaurants and leisure facilities.

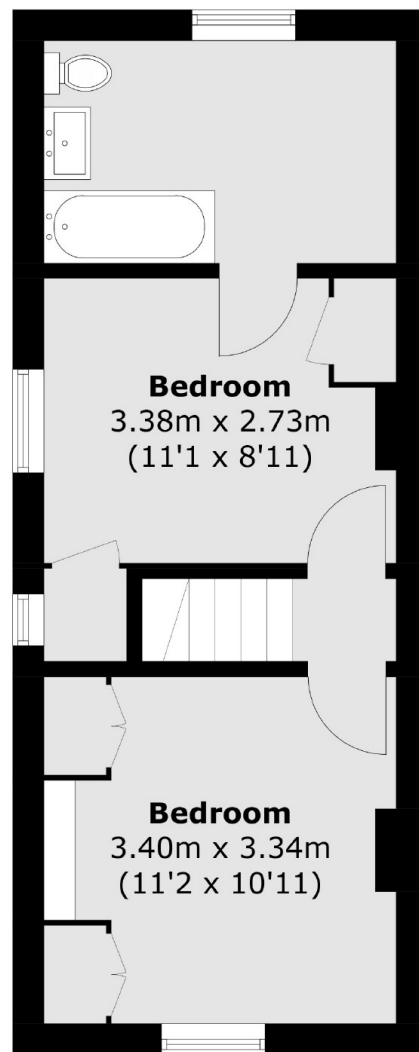
Features

- Two Double Bedrooms
- Upstairs Bathroom
- Two Reception Rooms
- Side Extension
- Paved Garden
- Modern Kitchen

Victoria Road, Kingston Upon Thames, KT1



Ground Floor



First Floor

Total area (approx.): 71.0 sq. m (764.3 sq. ft)