

Queenshurst Square, KT2

£630,000

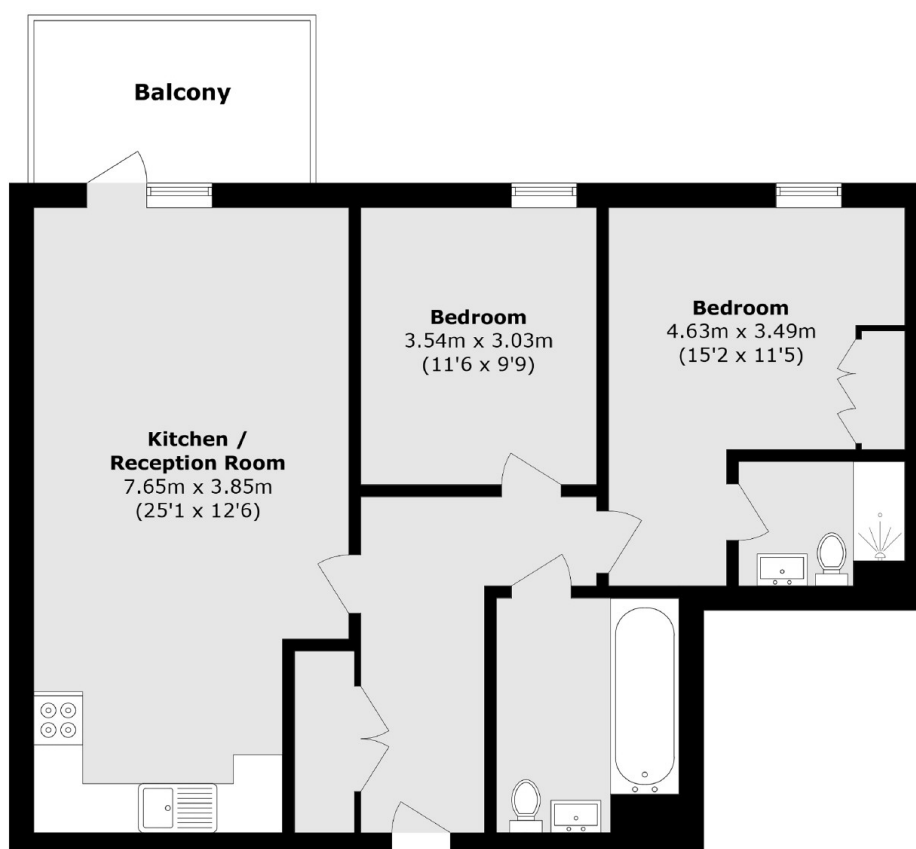
This impressive two bedroom apartment is located within Hamond Court, part of the highly regarded Queenshurst Square development in the heart of Kingston. Built in 2018 by award winning developers Berkeley Homes, the property offers spacious, modern living with two well proportioned bedrooms, two bathrooms and an open plan kitchen. As well as this, the living area leads to a private balcony with attractive views over the landscaped courtyard gardens. Residents benefit from excellent on site amenities, including a fully equipped gym, concierge service, private cinema room and lift service.

Hamond Court offers an exceptional central location, just 250 yards from Kingston Train Station and moments from the River Thames, Canbury Gardens and an extensive range of shops, restaurants, and leisure amenities. The open green spaces of Richmond Park are less than a mile away, while outstanding local schools add to the appeal of this well connected development.

Features

- Two Double Bedrooms
- Private Balcony
- Residents Gymnasium
- 24 Hour Concierge
- Residents Cinema Room
- Communal Gardens

Queenshurst Square, Kingston Upon Thames, KT2



Total area (approx.): 73.1 sq. m (786.8 sq. ft)

Balcony area (approx.): 6.7 sq. m (72.1 sq. ft)