



Royal Quarter, KT2

£285,000

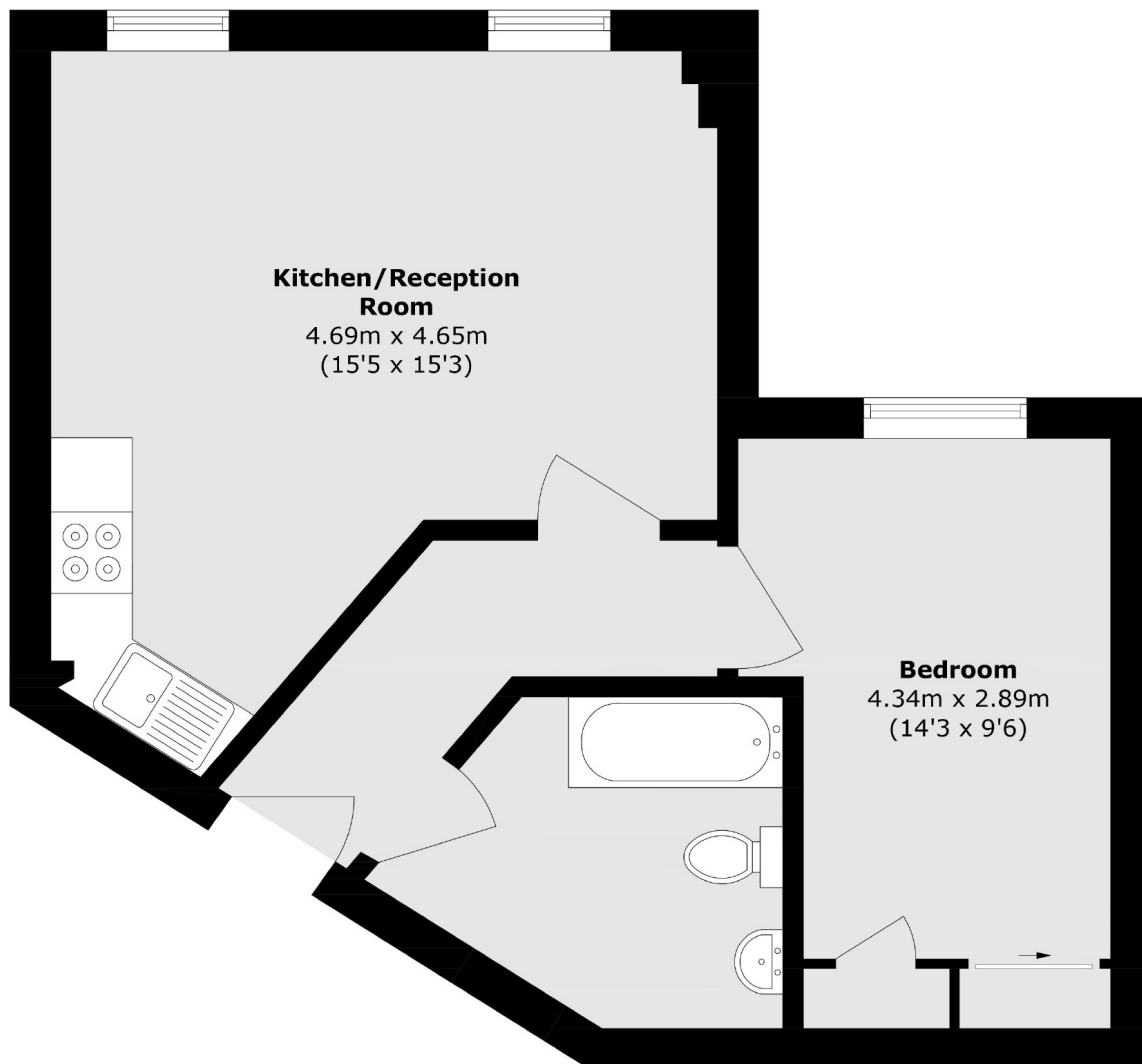
Located on the first floor, is this light and airy apartment which has a spacious reception room and open-plan modern kitchen. There is a double bedroom with a fitted double wardrobe and fully tiled modern bathroom. The apartment benefits from the Royal Quarter concierge service, residents health suite, gym, landscaped internal gardens and cycle storage.

Royal Quarter is located in central Kingston within close proximity of the historic Kingston town centre, and Kingston's mainline train station with frequent trains to London Waterloo.

Features

- First Floor
- Communal Gardens
- Lift Access
- Concierge
- Gym
- Long Lease

Royal Quarter, Kingston Upon Thames, KT2



Total area (approx.): 42.6 sq. m (458.5 sq. ft)