



Aboyne Drive, SW20

£350,000

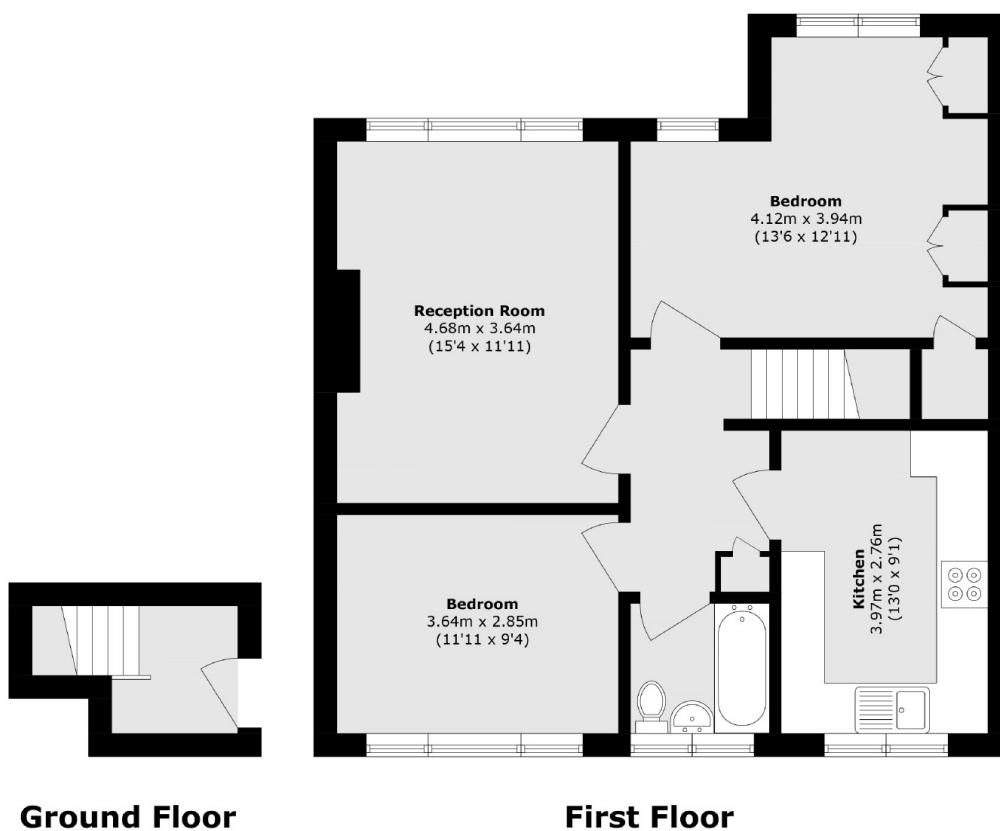
A spacious first floor maisonette with two double bedrooms and its own private entrance, quietly situated in a peaceful cul-de-sac. The property benefits from a large private rear garden, a generous eat-in kitchen and excellent storage throughout. Offered with no onward chain, it presents a fantastic opportunity for the new owners to add value and personalise the interior to their own taste and style.

Allowing easy access to the A3, the property is also well located for both Raynes Park and New Malden Stations and High Street, both less than a mile away.

Features

- Two Double Bedrooms
- Spacious Reception Room
- Eat-In Kitchen
- Private Garden
- Convenient Location
- No Onward Chain

Aboyne Drive, London, SW20



Total area (approx.): 71.8 sq. m (772.8 sq. ft)