



London Road, KT2

£340,000

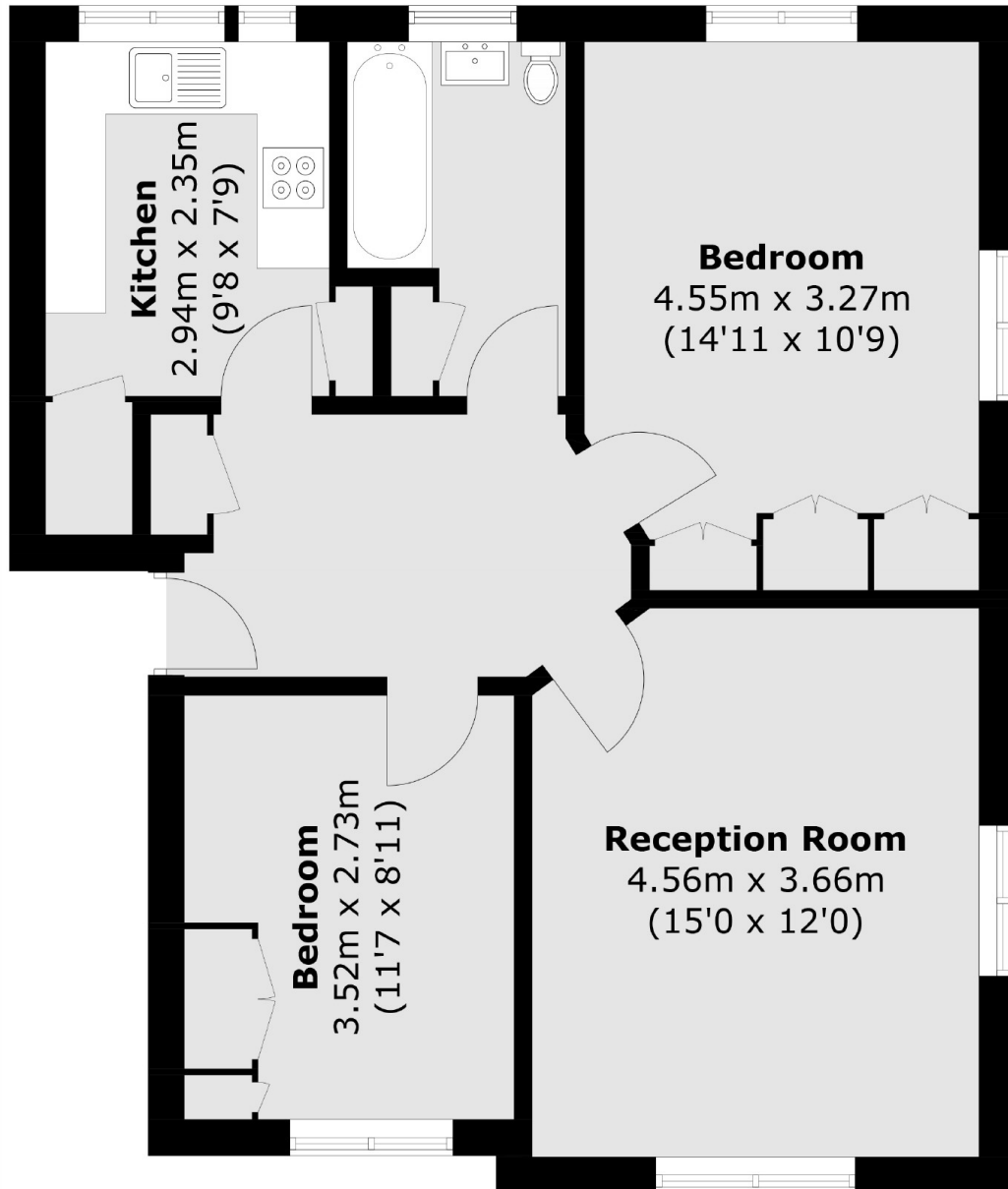
Located in central Kingston and providing easy access to Norbiton Train Station is this two double bedroom, first floor flat with a corner aspect, providing plenty of natural light. The accommodation consists of a large receiving hallway, kitchen, double aspect reception room, double aspect principal bedroom with fitted wardrobes, second bedroom and bathroom. The flat also benefits from residents parking.

Birkenhead Avenue is just off London Road and offers access to both Kingston and Norbiton Train Stations, Kingston town centre, Richmond Park and the River Thames.

Features

- Central Location
- First Floor Corner Plot
- Two Double Bedrooms
- Modern Kitchen
- Security Entry Phone System
- Residents Parking

London Road, Kingston Upon Thames, KT2



Total area (approx.): 64.8 sq. m (697.5 sq. ft)

Dexters

Kingston
4 Wood Street
Kingston Upon Thames
KT1 1TG

Sales
020 8546 3555

Energy Rating: C. We aim to make our particulars both accurate and reliable. However they are not guaranteed; nor do they form part of an offer or contract. If you require clarification on any points then please contact us, especially if you're traveling some distance to view. Please note that appliances and heating systems have not been tested and therefore no warranties can be given as to their good working order.

 **RICS** | Regulated
Estate Agent
and Letting Agent

[dexters.co.uk](https://www.dexters.co.uk)