



Rushmon Villas, KT3

£2,000 Per calendar month

Moments from New Malden Town Centre is this well presented and spacious two bedroom house benefitting from driveway parking and a gardener included in the rent.

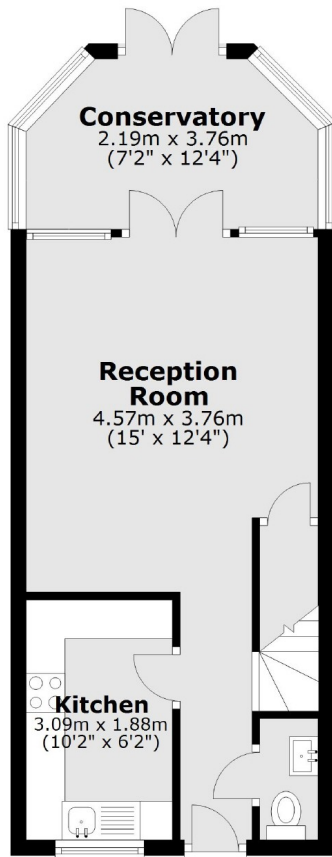
Rushmon Villas, Cavendish Road is ideally located for both New Malden High Street and for New Malden train station offering direct services into London Waterloo. Families are easily catered for with excellent schools and many green open spaces situated close by. Kingston and Wimbledon town centres offer excellent shopping facilities, theatres and main line train and tube services to Central London.

Features

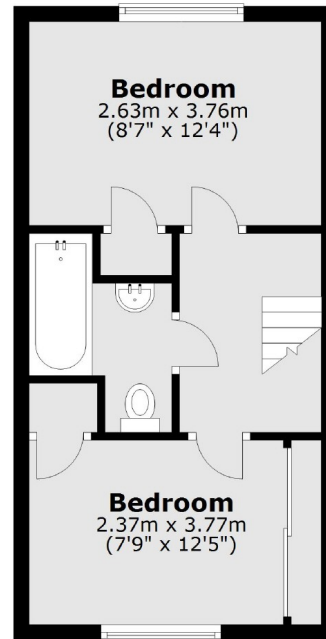
- Two Double Bedrooms
- Spacious Reception Room
- Modern Luxury Bathroom
- Neff Appliances
- Downstairs Cloakroom
- Garden & Off Street Parking

Rushmon Villas, New Malden, KT3

Ground Floor



First Floor



Total area: approx. 66.1 sq. metres (711.8 sq. feet)