



## Royal Quarter, KT2

### £485,000

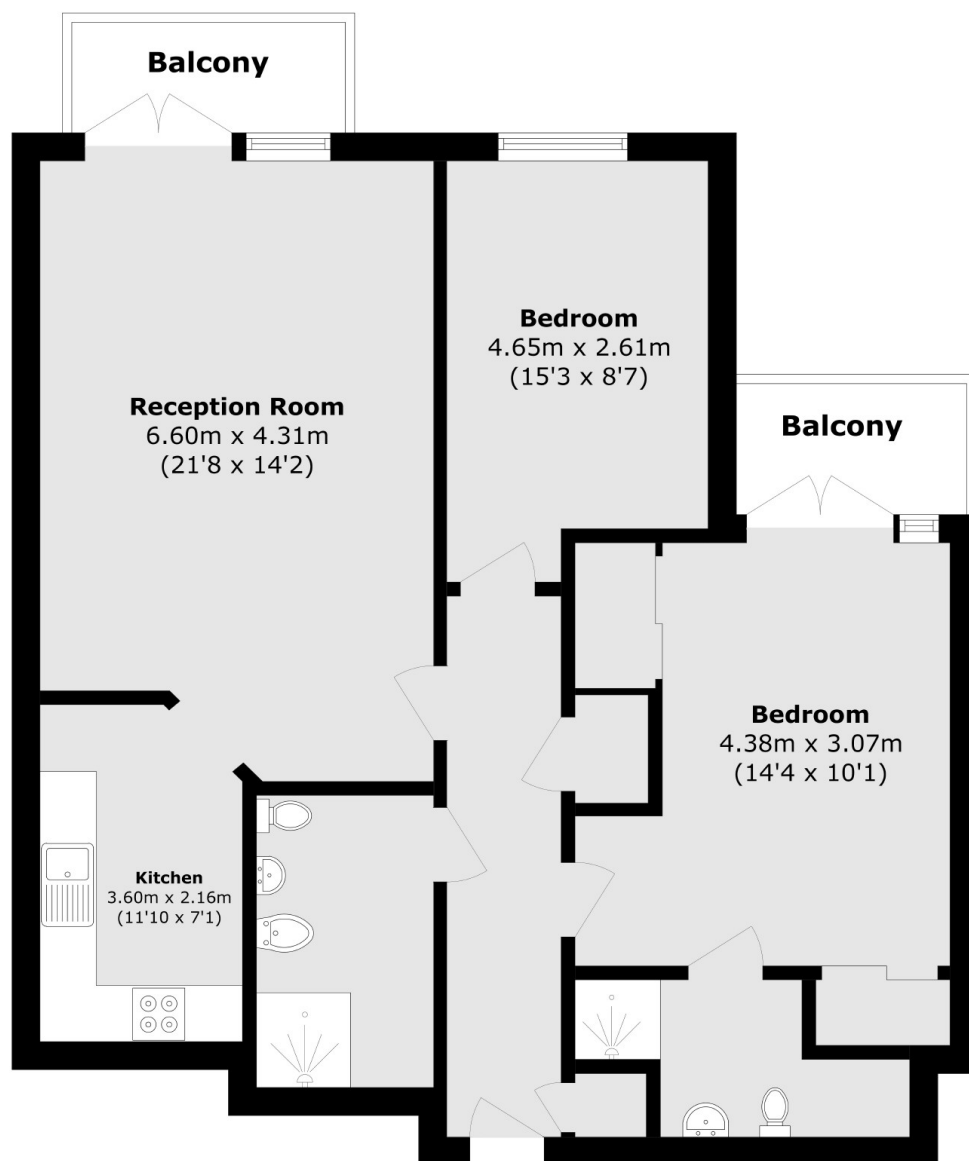
A lovely two bedroom two bathroom 934 sq ft first floor apartment with a private balcony. This bright and airy apartment has a large living room, a modern kitchen, two bathrooms and comes with secure underground parking. The property also features a lift service to all floors, 24 hour concierge, a residents gymnasium and a balcony off the master bedroom. Both balcony doors are sliding doors.

Earlsfield House forms part of the Royal Quarter, a popular development centrally located on the doorstep of Kingston town centre, yet remarkably quiet due to the private and gated communal grounds.

### Features

- Two Bedrooms
- Sought After Development
- Central Location
- Close To River
- Long Lease
- Underground Parking

# Royal Quarter, Kingston Upon Thames, KT2



Total area (approx.): 86.8 sq. m (934.3 sq. ft)

Total area (approx.): 6.8 sq. m (73.1 sq. ft)