



Kings Road, KT2

£410,000

Location and quality are the two most important factors for most when looking for a new home and you will find it hard to beat either with this beautiful maisonette.

Located just a few yards to the entrance of Richmond Park is this rarely available one bedroom maisonette with a beautiful private rear garden and stunning home office.

Located on Kings Road, just a few yards from the gates of Richmond Park, this is a dream location to enjoy this magnificent park. You are also just half a mile to Norbiton Station and less than a mile to Kingston town centre and the banks of the River Thames.

Features

- One Double Bedroom
- Private Garden
- Home Office
- Private Entrance
- Enviably Location
- Long Lease



Kings Road, KT2

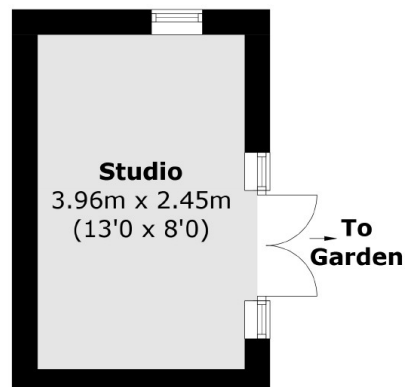
The security coded side gate takes you into the garden where you can access the property through our own front door which leads you onto the first floor.

The property is beautifully decorated throughout and has a stunning kitchen which is open plan yet separated by a breakfast bar to the spacious living room. This is a large, bright space with attractive shutters fitted to the bay fronted window, attractive period fireplace and plenty of room for a dining table. There is also a lovely double bedroom and modern bathroom suite.

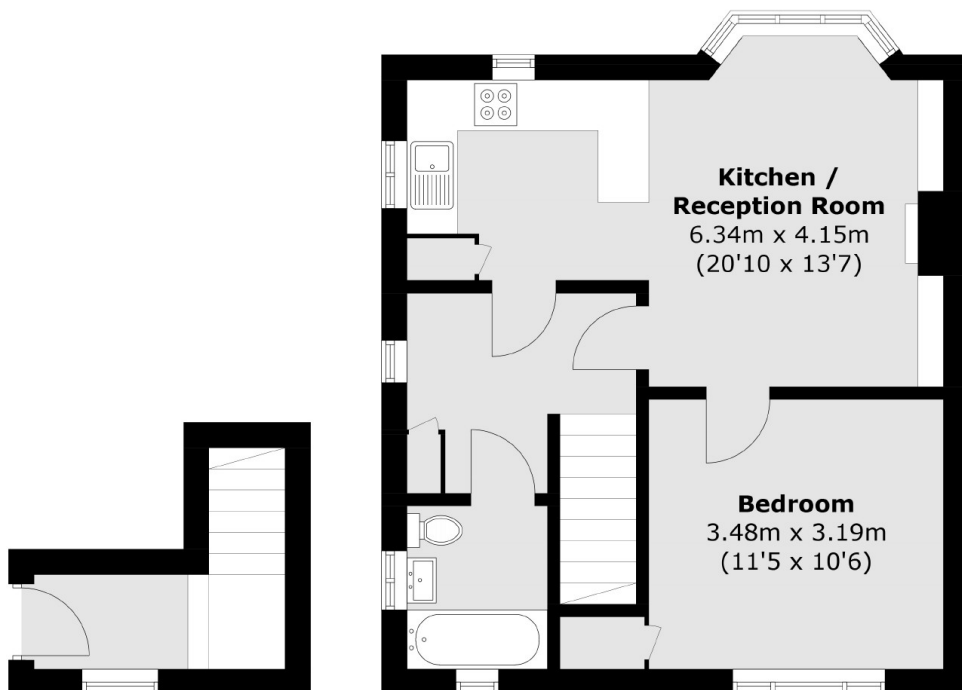
Outside is the unusually large, south facing, private garden with a large lawn area, patio, built in seating and a stylish home office that could also make the perfect gym or summer garden room.



Kings Road, Kingston Upon Thames, KT2



(Not Shown In Actual
Location / Orientation)



Ground Floor

First Floor

Total area (approx.): 49.9 sq. m (537.1 sq. ft)
Studio: 9.9 sq. m (106.6 sq. ft)