



## Kingston Hill, KT2

£2,395 Per calendar month

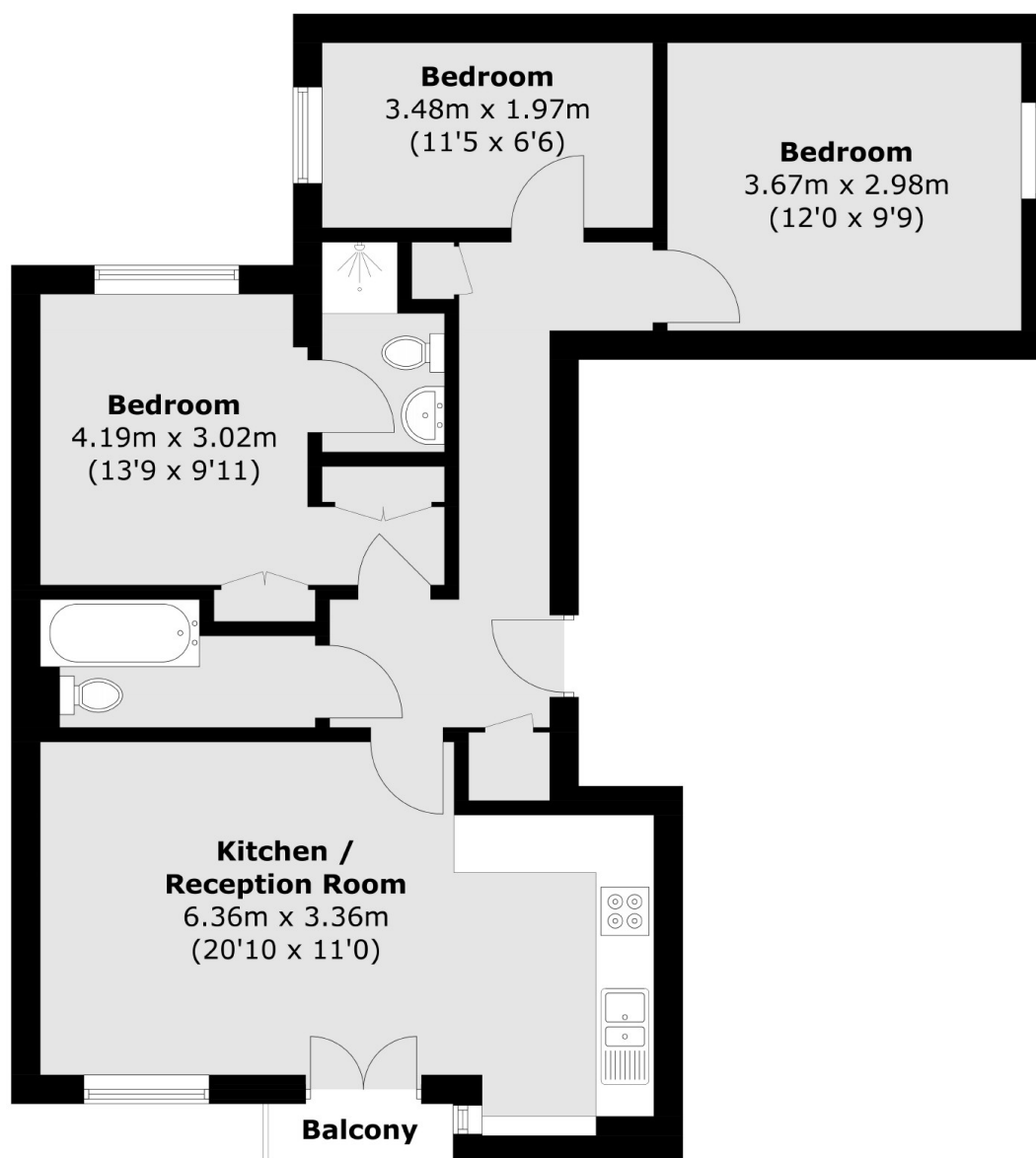
This exceptional three double bedroom flat offers spacious living and is ideal for a couple, sharers or even a small family. The property benefits from plenty of light throughout, private parking space and a communal garden.

Conveniently located, a short walk from Richmond Park, moments from Norbiton station giving direct access into Waterloo. Kingston centre, with its array of shops, restaurants and riverside attractions is a short distance away. Outstanding schools nearby.

### Features

- Three Bedrooms
- Two Bathrooms
- Well Located
- Parking Included
- Stylish And Modern
- Balcony

# Kingston Hill, Kingston Upon Thames, KT2



Total area (approx.): 67.9 sq. m (730.9 sq. ft)  
Balcony: 1.1 sq. m (11.8 sq. ft)

## Dexters

Kingston  
4 Wood Street  
Kingston Upon Thames  
KT1 1TG  
Lettings  
020 8546 3003

Energy Rating: C. We aim to make our particulars both accurate and reliable. However they are not guaranteed; nor do they form part of an offer or contract. If you require clarification on any points then please contact us, especially if you're traveling some distance to view. Please note that appliances and heating systems have not been tested and therefore no warranties can be given as to their good working order.

 **RICS** | Regulated  
Estate Agent  
and Letting Agent

[dexters.co.uk](https://www.dexters.co.uk)