



## Bedford Villas, KT1

£650,000

A charming three bedroom semi-detached period home, offered for sale with no onward chain. The house has been recently redecorated throughout including the exterior. The property is well presented, while still offering exciting potential for further improvement.

Bedford Villas is located on Somerset Road, a popular location just 350 yards to Fairfield Recreational Park and just half a mile to Kingston Town Centre.

### Features

- Three Bedrooms
- Semi-Detached
- Large Private Garden
- No Onward Chain
- Recently Decorated
- Scope To Improve



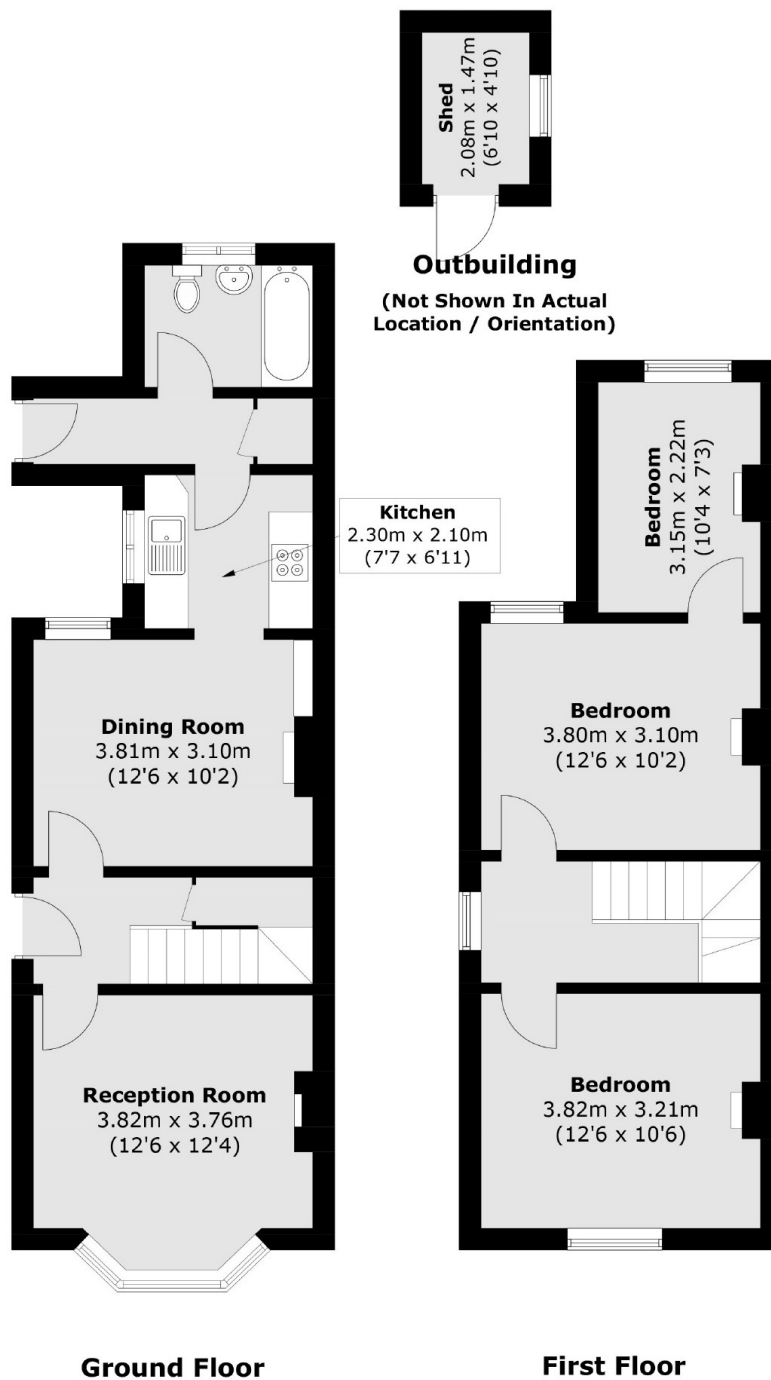
## Bedford Villas, KT1

This attractive home features double-glazed windows, several character fireplaces and a large well-maintained rear garden. There remains ample scope to update, extend and add value; subject to the usual planning permissions.





# Bedford Villas, Kingston Upon Thames, KT1



Total area (approx.): 84.1 sq. m (905.2 sq. ft)  
Outbuilding: 3.2 sq. m (34.4 sq. ft)

## Dexters

Kingston  
4 Wood Street  
Kingston Upon Thames  
KT1 1TG  
Sales  
020 8546 3555

Energy Rating: D. We aim to make our particulars both accurate and reliable. However they are not guaranteed; nor do they form part of an offer or contract. If you require clarification on any points then please contact us, especially if you're traveling some distance to view. Please note that appliances and heating systems have not been tested and therefore no warranties can be given as to their good working order.

 **RICS** | Regulated  
Estate Agent  
and Letting Agent

[dexters.co.uk](https://www.dexters.co.uk)