



Antoinette Close, KT1

£429,950

A stunning third floor, one bedroom apartment with bright, spacious and stylish accommodation. The interior is finished to a high standard with a sleek, contemporary design and an open-plan layout that maximises light and space. A standout feature is the large private balcony, providing far-reaching views thanks to the elevated position. Additional benefits include an allocated underground secure parking space, concierge service and access to a residents gymnasium.

Harrier House is ideally positioned, equidistant from Kingston town centre, the River Thames, and Surbiton mainline station. This prime location offers the best of both towns, transport links and riverside walks.

Features

- One Double Bedroom
- Immaculate Condition
- Residents Gym and Concierge
- West-Facing Balcony
- Underfloor Heating Throughout
- No Onward Chain



Antoinette Close, KT1

The property is entered via a smart, modern communal entrance with a video entryphone system providing lift and staircase access to the third floor.

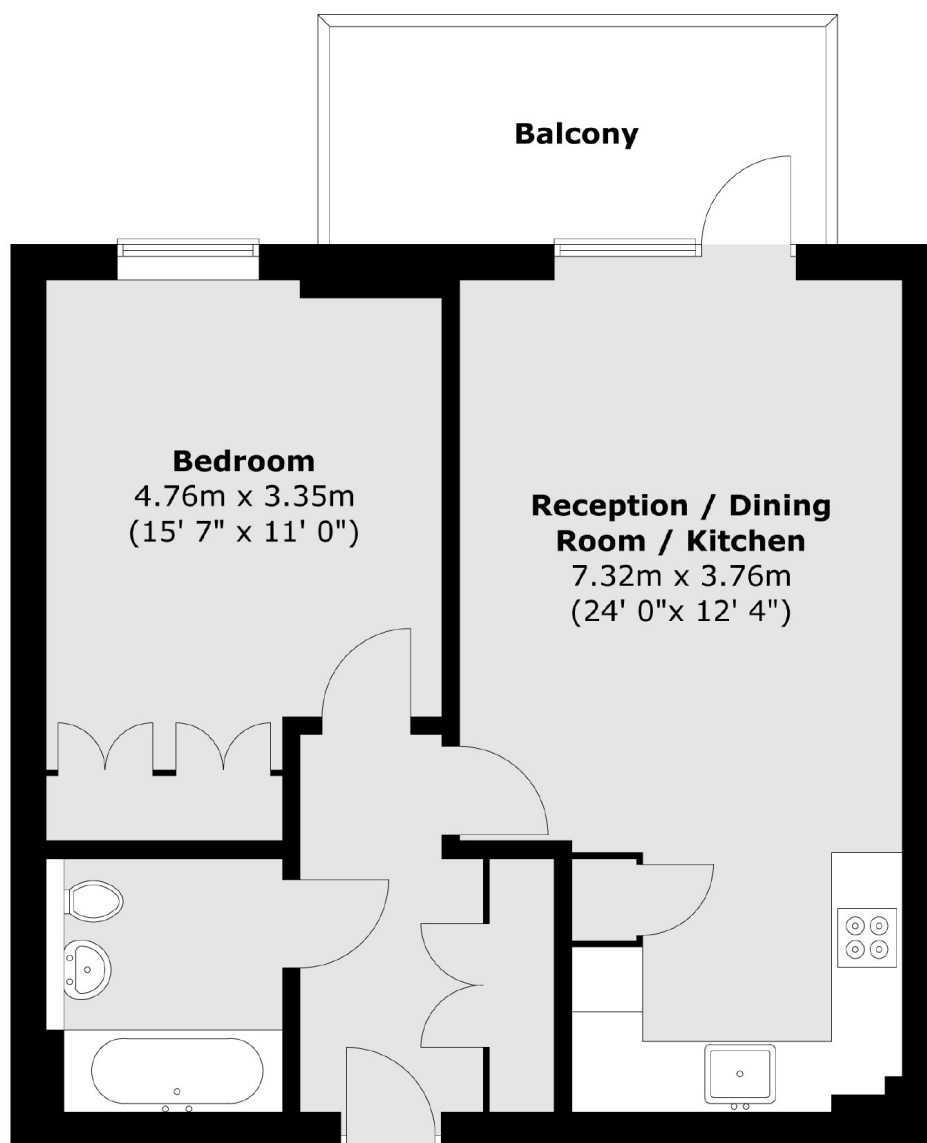
As you enter the apartment there is a spacious entrance hall with storage. The living room is beautifully decorated, has room for a dining table and double glazed door leading to a large private balcony. The modern kitchen is open-plan to the living room with integrated Smeg appliances and smart modern tiling on the walls. The double bedroom is larger than average, beautifully decorated and has the added benefit of built-in wardrobes. The bathroom perfectly compliments this modern and contemporary apartment.

The private balcony offers far reaching views as well as overlooking the peaceful communal gardens, a wonderful place to enjoy the sunset and surroundings. As well as the quiet communal gardens there is residents bike storage and access to the secure underground car park.



Antoinette Close,
Kingston Upon Thames, KT1

Third Floor



Total area (approx.) : 51.7 sq. m (556 sq. ft)
Total balcony area (approx.) : 6.6 sq. m (71 sq. ft)