



Birkenhead Avenue, KT2

£390,000

This wonderful two double bedroom, corner apartment is situated on the first floor of the ever popular Norbiton Hall development. The apartment offers bright and generously proportioned accommodation throughout. Enjoying a prime position within the development, the property overlooks the communal gardens and residents' parking area.

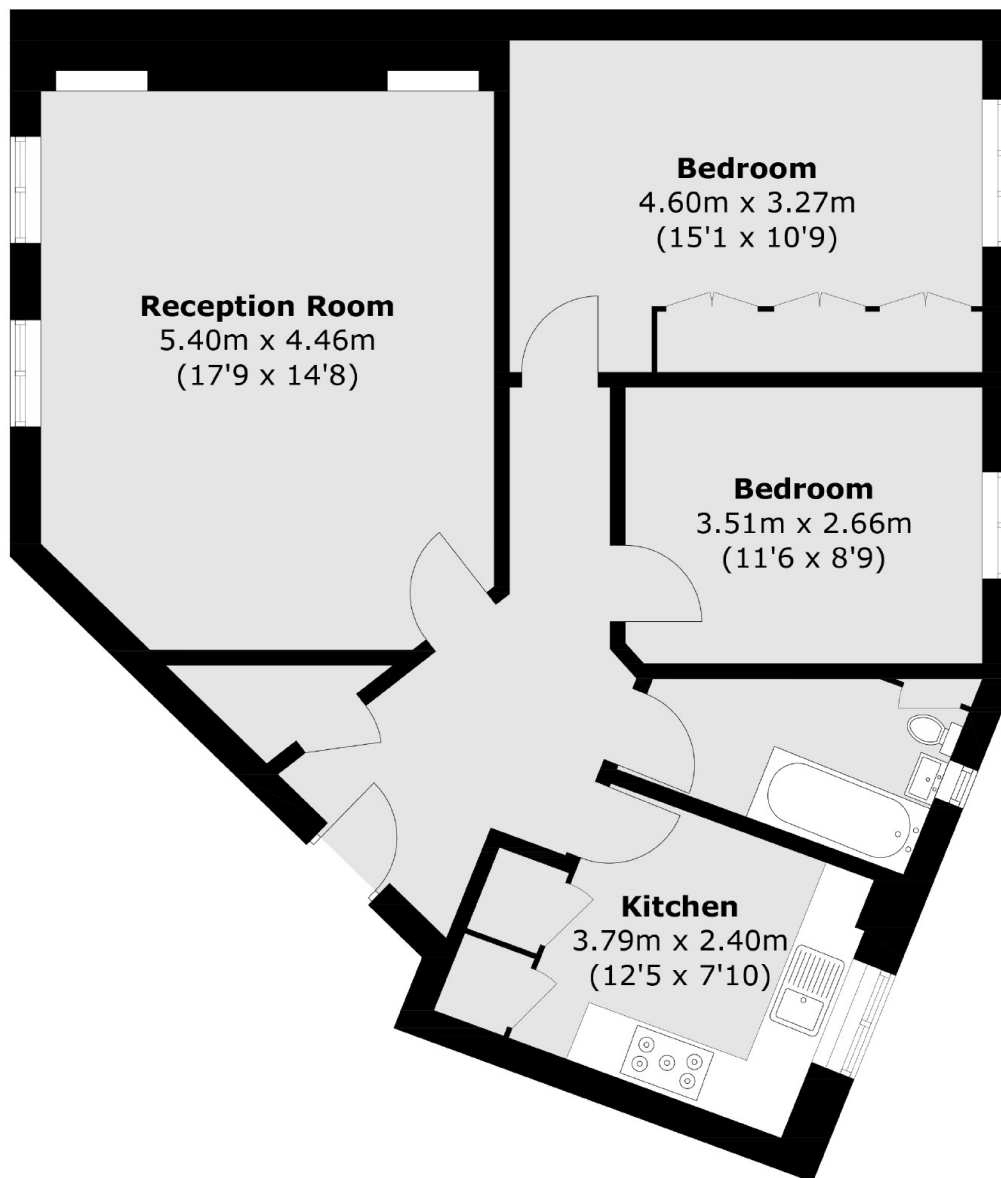
The apartment features a larger than average living room, enhanced by attractive wood flooring and ample space for a defined dining area. With an abundance of natural light and a well thought out layout, this home is perfect for first time buyers, downsizers or buy to let investors.

Norbiton Hall is a Landmark development in Kingston and ideally placed for access to both Norbiton and Kingston Mainline Stations, as well as an array of local shops and supermarkets within 100 yards of the property.

Features

- Two Double Bedrooms
- Large Living Room
- Excellent Location
- Closer To Rail Links
- Close To Local Shops
- Residents Parking

Birkenhead Avenue, Kingston Upon Thames, KT2



Total area (approx.): 78.5 sq. m (845.0 sq. ft)