



Sopwith Way, KT2

£1,550 Per calendar month

This spacious two bedroom, two bathroom apartment with parking has a quirky mezzanine level which is the perfect spot if you are working from home or want an additional living area.

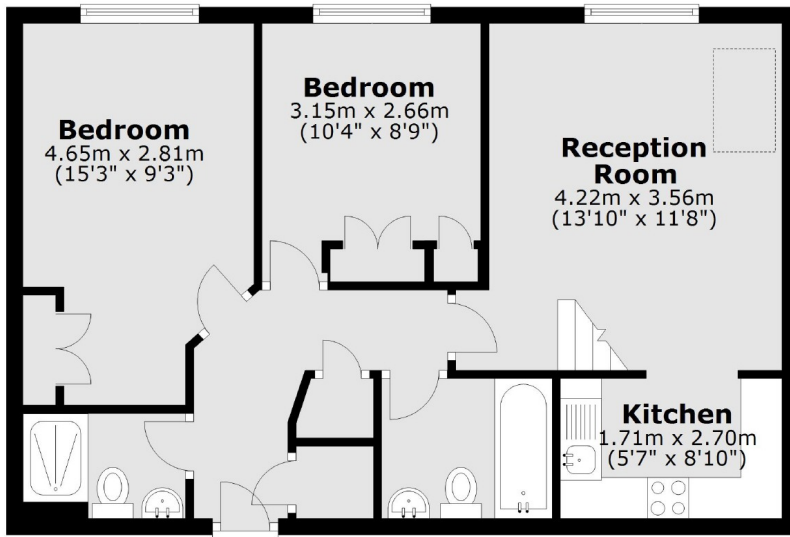
A wonderful apartment within this popular development in central Kingston including use of residents gym and secure parking and is conveniently located for Kingston train station.

Features

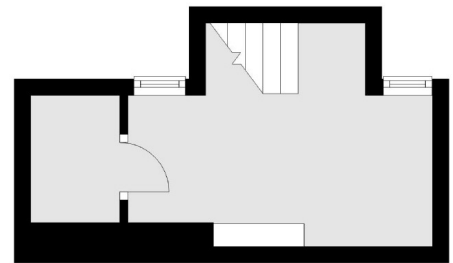
- Two Bedrooms
- Two Bathrooms
- Mezzanine Level
- Secure Parking
- Resident Gym
- Neutral Decor

Sopwith Way, Kingston Upon Thames, KT2

Third Floor



Mezzanine



Total area: approx. 66.4 sq. metres (715.1 sq. feet)