



Grove Crescent, KT1

£425,000

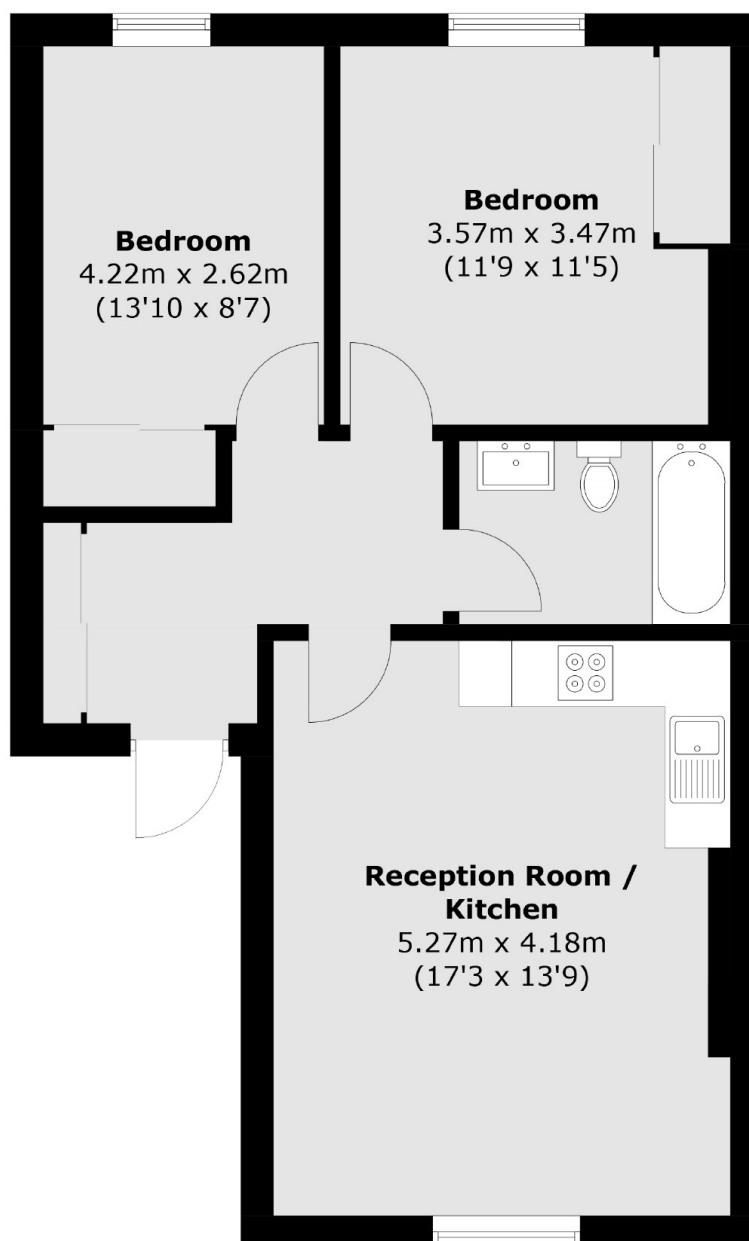
This top floor, two bedroom, period conversion is offered to the market with no onward chain. The property benefits from an open plan kitchen/reception room, ample storage and allocated parking. Further benefits include being share of freehold, low service charge and additional loft storage.

Grove Crescent is centrally situated within Kingston, ideally positioned for Richmond Park, the River Thames, as well as Kingston and Surbiton Mainline Train Stations. The property is also just a short walk to the extensive shopping and leisure facilities, including both High Street and artisan shops, independent coffee shops and fabulous bars and restaurants.

Features

- Share Of Freehold
- Two Double Bedrooms
- Second Floor
- Period Conversion
- Allocated Parking
- No Onward Chain

Grove Crescent, Kingston Upon Thames, KT1



Total area (approx.): 58.0 sq. m (624.3 sq. ft)