



Lower Kings Road, KT2

£449,950

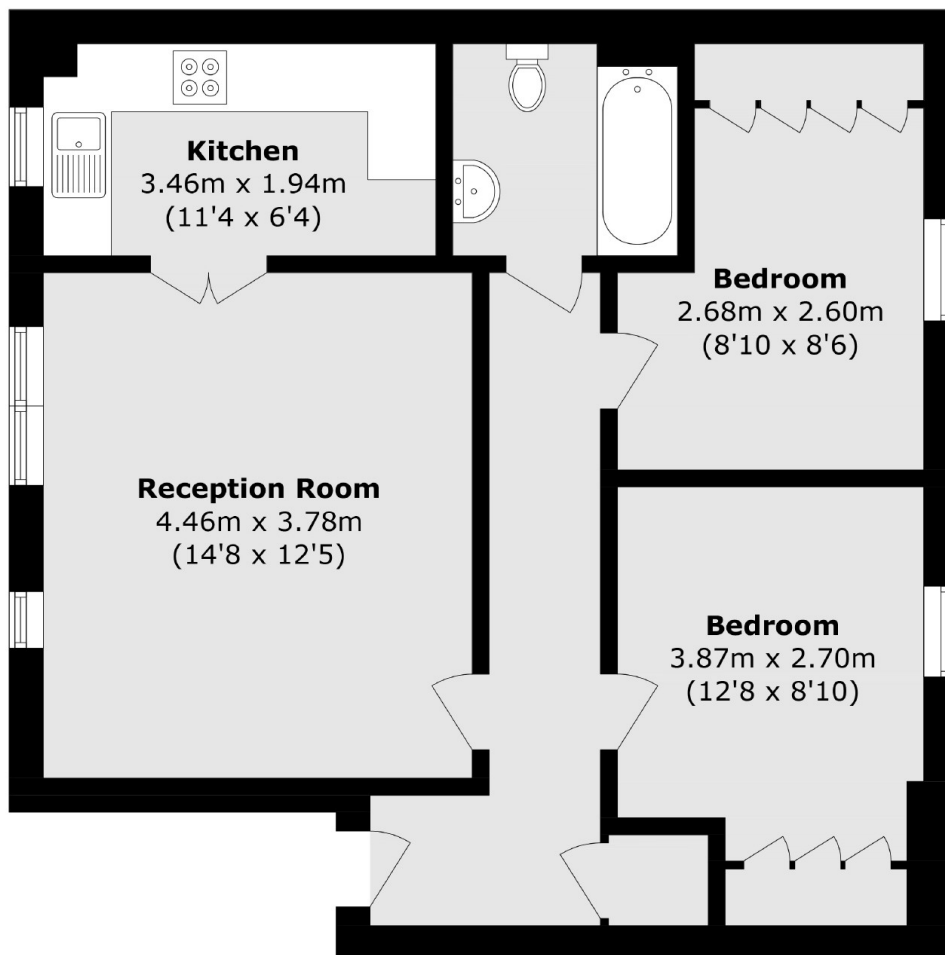
A beautifully presented, two bedroom, top floor apartment located in this popular development, just a few yards to Canbury Gardens and the River Thames. This smart, gated development also benefits from private allocated residents parking, a share of freehold and no onward chain. A wonderful apartment in a highly sought after, riverside location in Central Kingston.

Elizabeth Court is perfectly located in central Kingston, yet your surroundings are the quiet and ever popular Canbury Gardens and the River Thames. With a large selection of apartments available, this apartment will be hard to beat in terms of location and condition.

Features

- Top Floor
- Two Bedrooms
- Share Of Freehold
- Wonderful Location
- Gated Development
- Allocated Parking

Lower Kings Road, Kingston Upon Thames, KT2



Total area (approx.): 56.6 sq. m (609.2 sq. ft)