



Burlington Road, KT3

£275,000

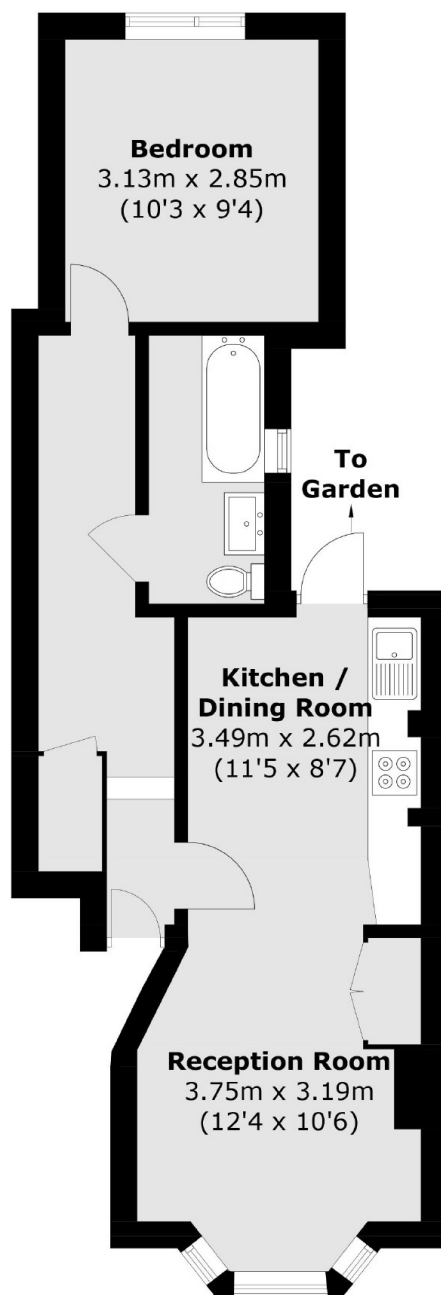
This well proportioned, ground floor, one bedroom conversion flat is offered to the market with no onward chain. The property offers good internal space with an open plan kitchen and living room with a bay window. Off the kitchen is a door leading out onto the large private garden. At the rear of the property is a large bedroom and a modern bathroom suite. There is also ample storage.

The property is conveniently located close to the amenities that New Malden High Street has to offer such as restaurants, cafés, supermarkets and station. There is also bus stops less than a thirty second walk from your front door. The A3 is also within very close reach with great access towards London and into Surrey.

Features

- Ground Floor Flat
- One Double Bedroom
- Large Private Garden
- Close To Amenities
- Open Plan Kitchen/Living
- No Onward Chain

Burlington Road, New Malden, KT3



Total area (approx.): 43.2 sq. m (465.0 sq. ft)

Dexters

Kingston
4 Wood Street
Kingston Upon Thames
KT1 1TG
Sales
020 8546 3555

Energy Rating: D. We aim to make our particulars both accurate and reliable. However they are not guaranteed; nor do they form part of an offer or contract. If you require clarification on any points then please contact us, especially if you're traveling some distance to view. Please note that appliances and heating systems have not been tested and therefore no warranties can be given as to their good working order.

 **RICS** | Regulated
Estate Agent
and Letting Agent

dexters.co.uk