



Galsworthy Road, KT2

£299,950

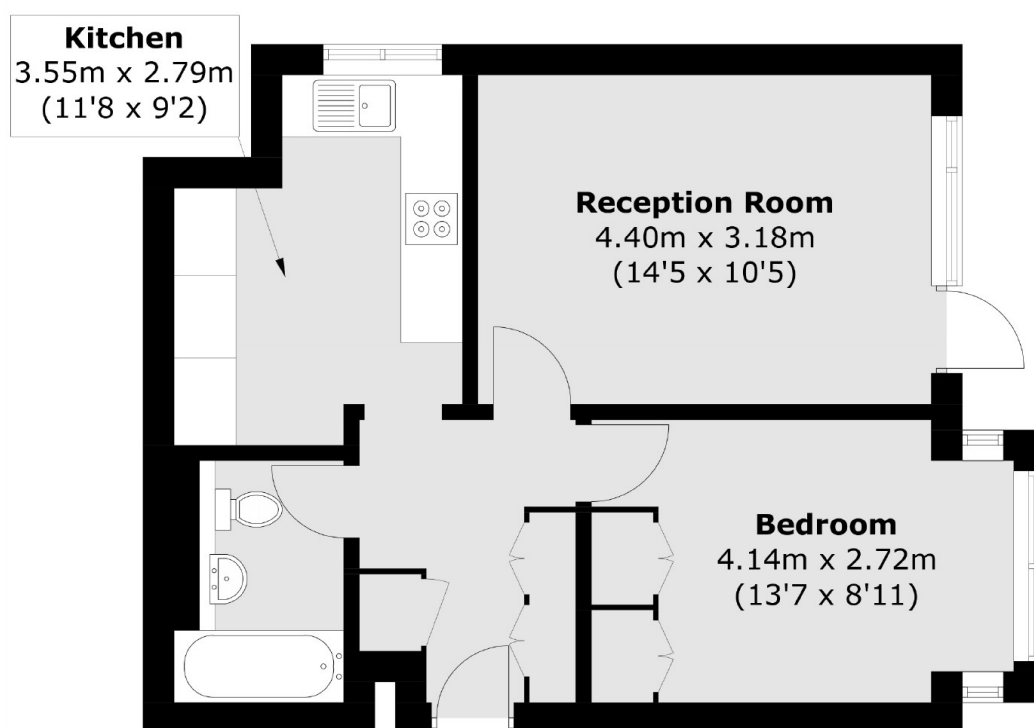
A well presented, one bedroom, ground floor apartment, set within a popular residential development. Offering just under 500 sq.ft of accommodation, this charming home provides ample space and a bright, welcoming feel throughout. Its ground floor position offers the added benefit of direct access to outdoor space, perfect for enjoying the lovely communal gardens.

This apartment is ideally situated just 400 meters from Norbiton station. There are excellent local shops and restaurants on your doorstep and Kingston town centre is just a mile away.

Features

- Ground Floor
- Double Bedroom
- Private Garage
- Communal Gardens
- No Onward Chain
- Residents Parking

Galsworthy Road, Kingston Upon Thames, KT2



Total area (approx.): 45.2 sq. m (486.5 sq. ft)