



## Surbiton Road, KT1

### £349,995

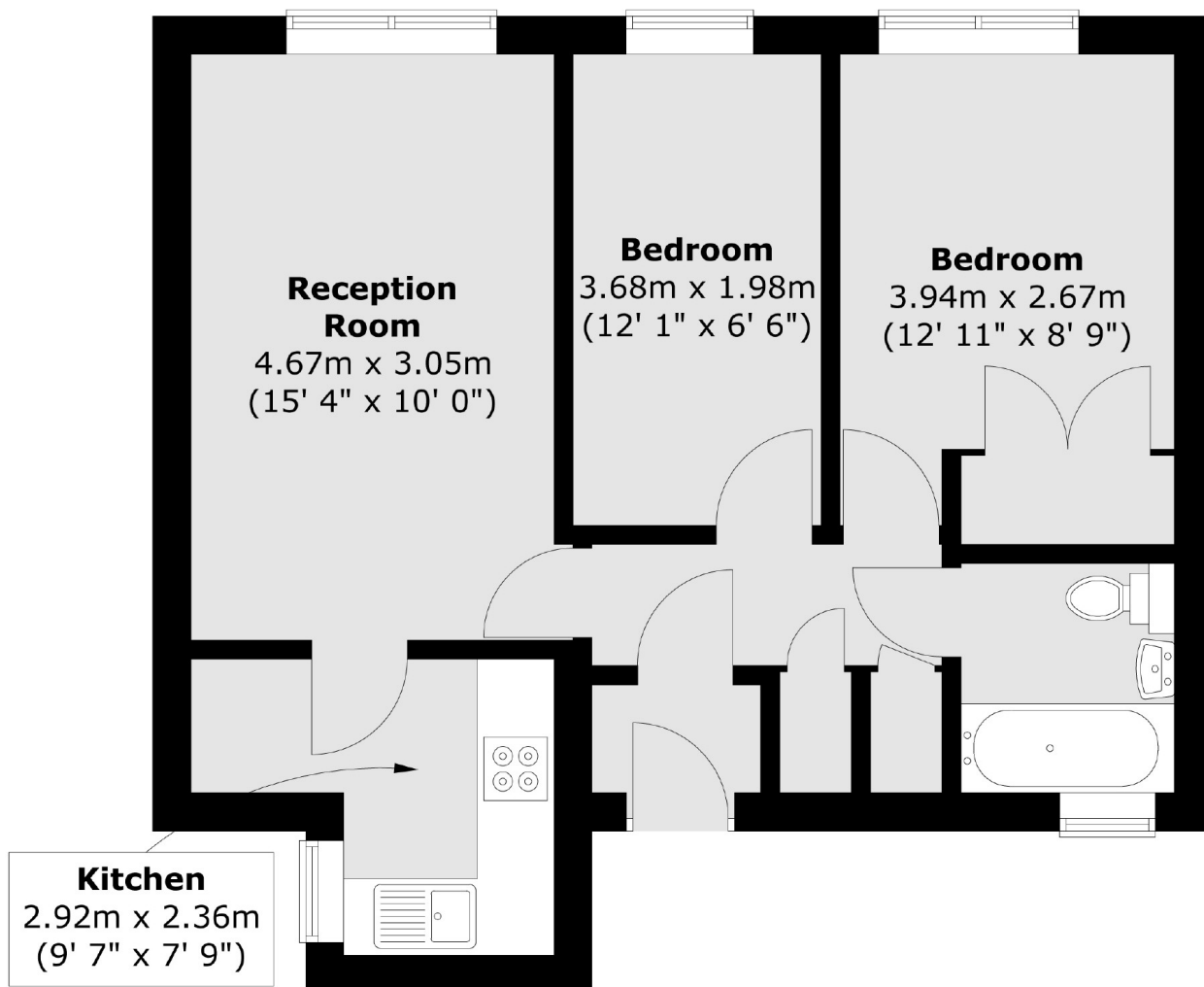
Forming part of a small and well maintained residential development, this charming first floor, two bedroom, purpose built apartment offers a fantastic opportunity for both homebuyers and investors alike. The property benefits from private residents' parking, adding convenience to its desirable location. Perfectly positioned between Kingston and Surbiton town centres, the apartment enjoys easy access to a wealth of shops and restaurants. What truly sets this home apart is its proximity to the River Thames, with beautiful riverside walks just a short stroll away.

Mcmillan House is ideally situated on Surbiton Road, a highly sought after residential location that links directly to Portsmouth Road and the picturesque River Thames. Residents can enjoy scenic riverside walks leading into Kingston town centre, offering a perfect balance of leisure and convenience. For commuters, Surbiton Station offering fast

### Features

- Two Bedrooms
- First Floor
- Private Residents Parking
- Open Plan Kitchen
- Close To The River Thames
- Excellent Location

# Surbiton Road, Kingston Upon Thames, KT1



Total area (approx.) : 48.6 sq. m (523 sq. ft)