



Kingsworthy Close, KT1

£310,000

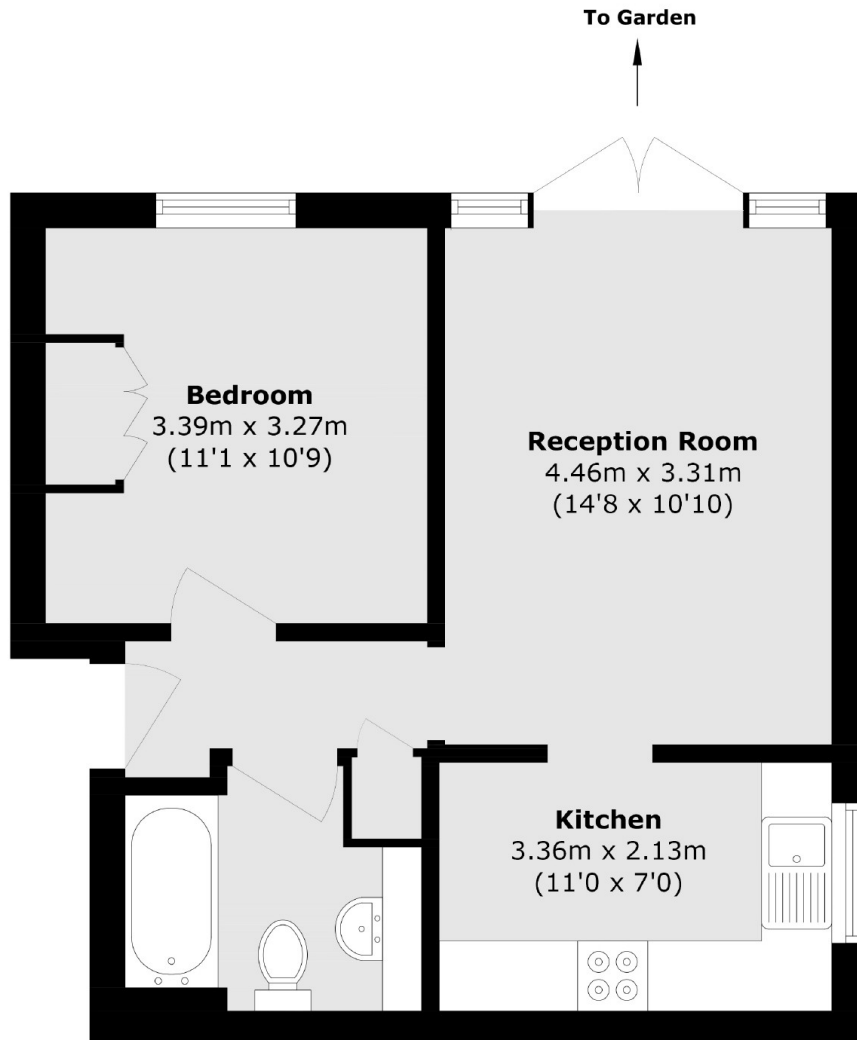
A spacious and modern one bedroom, ground floor apartment, tucked away in the corner of this sought after gated development. Bright and well proportioned, the apartment enjoys direct access to a tranquil, walled section of the communal garden, offering a sense of privacy.

Kingsworthy Close is a modern, gated development located just 150 yards to Fairfield Recreational Park and less than half a mile to Kingston town centre.

Features

- Ground Floor
- Direct Garden Access
- Quiet Corner Location
- Gated Development
- Residents Parking
- One Double Bedroom

Kingsworthy Close, Kingston Upon Thames, KT1



Total area (approx.): 42.9 sq. m (461.7 sq. ft)