



## Malden Hill, KT3

£999,950

A handsome four bedroom, Edwardian, semi-detached family home that seamlessly blends period charm with modern living. Brimming with character, the property features high ceilings and a beautiful fireplace in the front reception room, adding to its timeless appeal. Thoughtfully updated throughout, this home offers a perfect balance of classic elegance and contemporary comfort, making it an ideal choice for family living.

Malden Hill is a sought after location just off New Malden High Street and the house, just a short 500 yard stroll to both the High Street, as well as New Malden Station.

### Features

- Four Bedrooms
- Semi-Detached
- Edwardian Charm
- Off-Street Parking
- South Facing Garden
- Great Location



## Malden Hill, KT3

The ground floor features two elegant formal reception rooms. At the front, the main living room boasts a large bay window with shutters, a charming period fireplace and intricate ceiling mouldings. To the rear, the dining room mirrors the period details and offers direct access to the garden.

Additionally, this level includes a spacious utility room, a modern kitchen and the convenience of a ground floor WC.

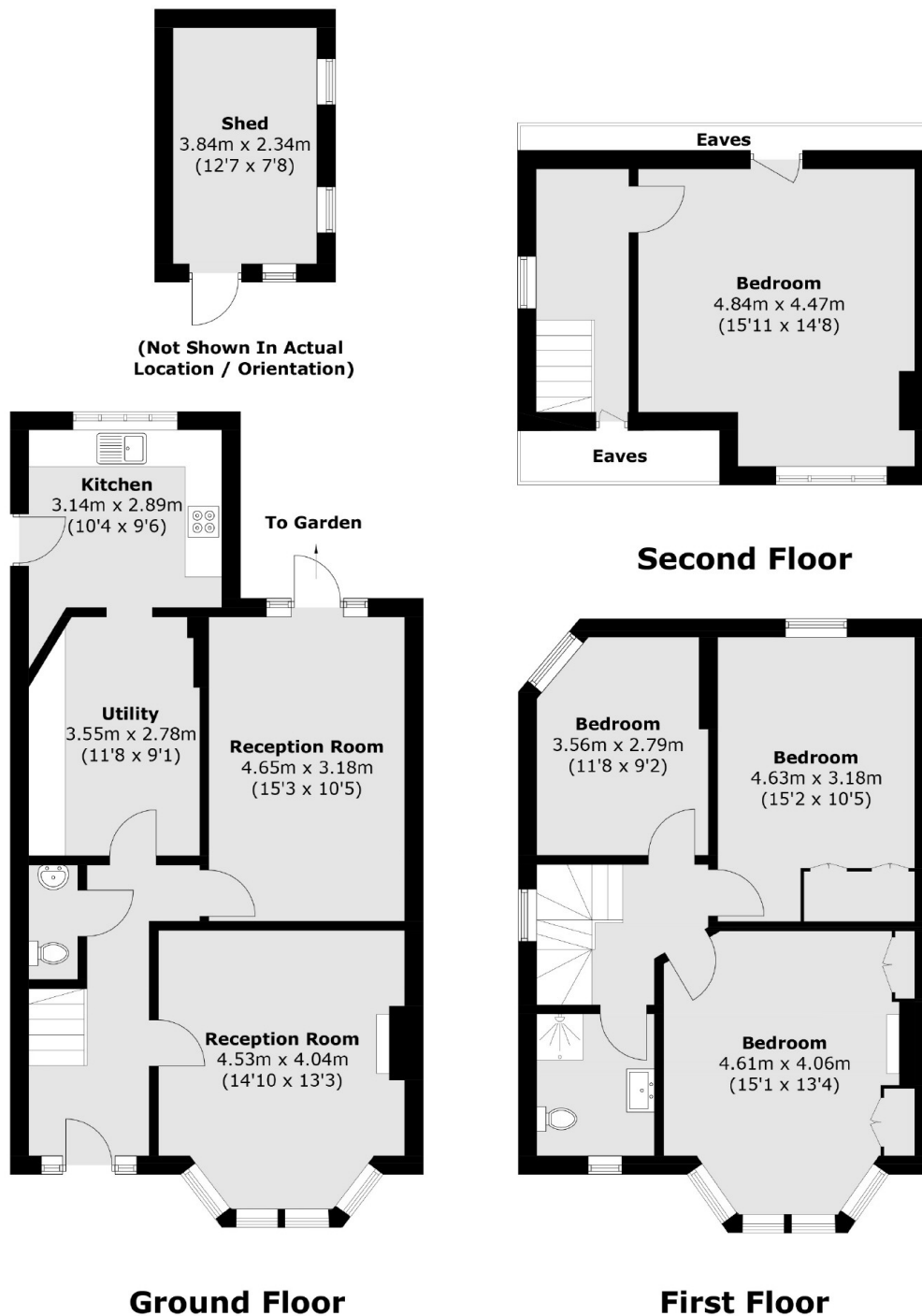
The first floor comprises three generously sized double bedrooms and a family bathroom. On the second floor, you'll find the fourth double bedroom, a stunning bright and spacious retreat that spans the entire level, featuring high ceilings and ample eaves storage.

Outside to the front there is off-street parking for multiple cars and to the rear is the lovely, south facing garden with a good size lawn, as well as patio areas and a large brick built storage shed.





# Malden Hill, New Malden, KT3



Total area (approx.): 146.2 sq. m (1,573.6 sq. ft)  
(Excluding Eaves)  
Shed: 9.1 sq. m (97.9 sq. ft)

## Dexters

Kingston  
4 Wood Street  
Kingston Upon Thames  
KT1 1TG  
Sales  
020 8546 3555

Energy Rating: D. We aim to make our particulars both accurate and reliable. However they are not guaranteed; nor do they form part of an offer or contract. If you require clarification on any points then please contact us, especially if you're traveling some distance to view. Please note that appliances and heating systems have not been tested and therefore no warranties can be given as to their good working order.

**RICS** Regulated Estate Agent and Letting Agent

dexters.co.uk