

## Skerne Road, KT2

### £499,950

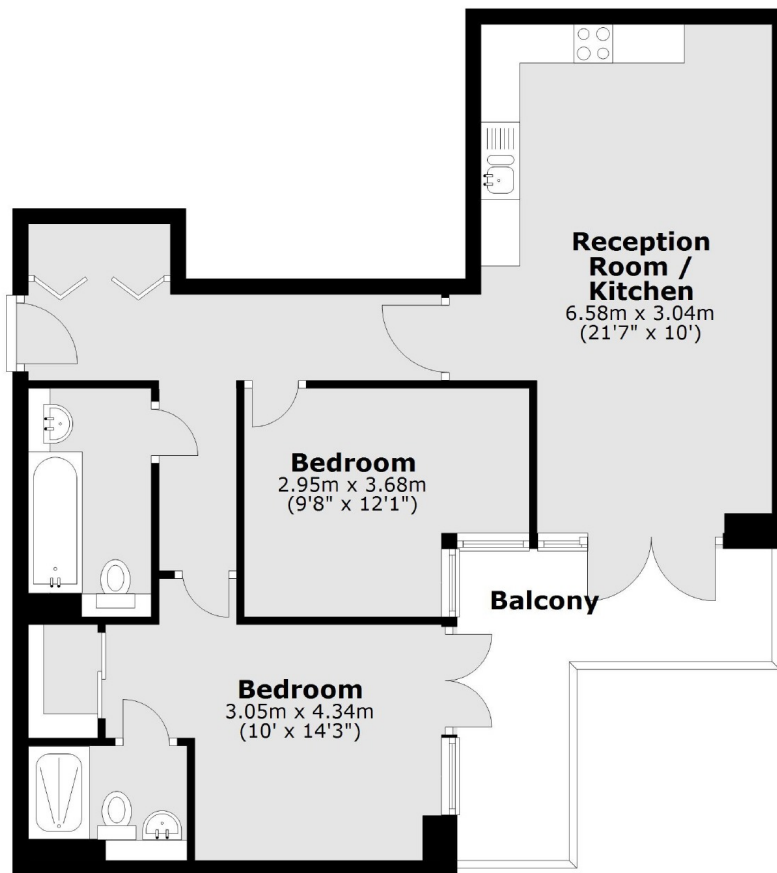
A beautifully finished, two double bedroom, two bathroom apartment on the sixth floor of this superbly located development. This exceptional light and bright apartment has a spacious open plan, well appointed kitchen reception room and a large private balcony accessed from both the principal bedroom and lounge.

Located on Skerne Road, is this Royal Gallery development built by Crest Nicholson. In the heart of Kingston town centre and moments from the River Thames and Station, this is a perfect location.

### Features

- Two Double Bedrooms
- Two Bathrooms
- Private Balcony
- Parking Space
- Lift Service
- Great Location

# Skerne Road, Kingston Upon Thames, KT2



Total area: approx. 67.0 sq. metres (721.4 sq. feet)