

Carlisle Close, KT2

£299,950

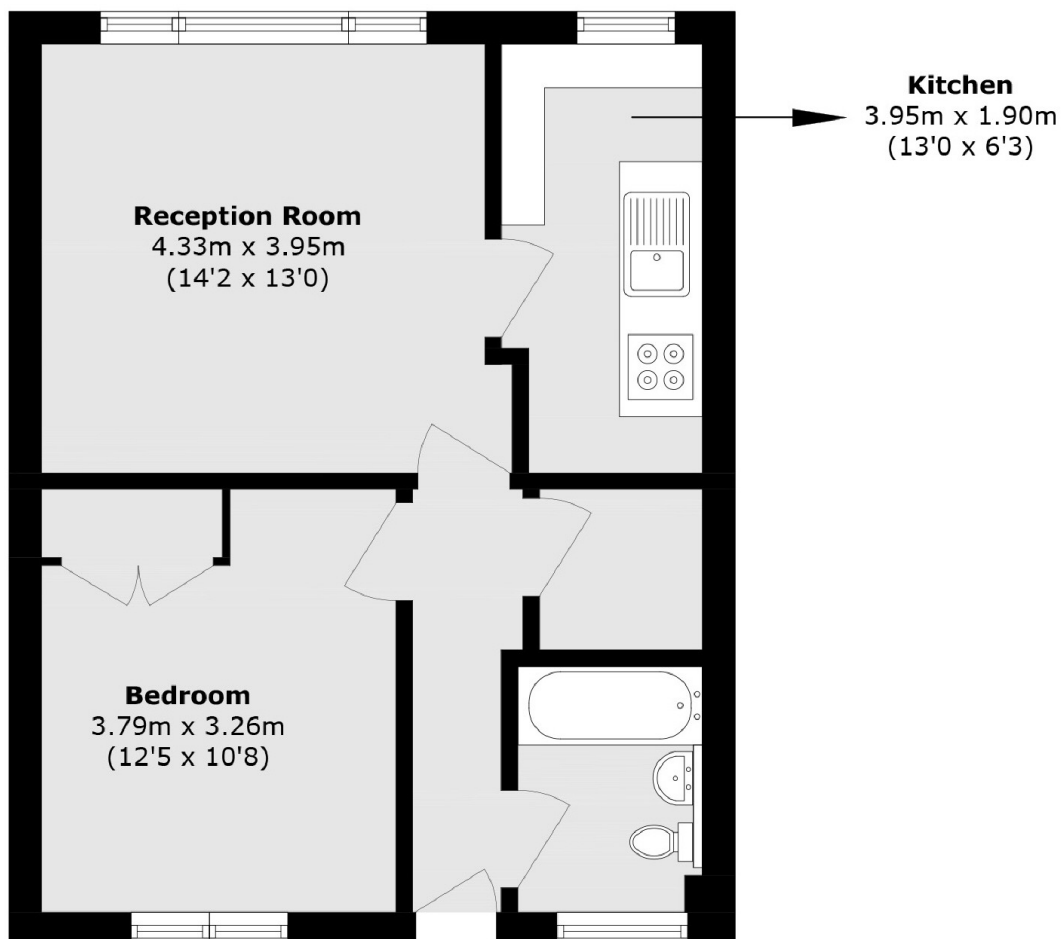
A well proportioned ground floor apartment with the rare advantage of a private entrance and additional outdoor storage. Bright and spacious, the property is offered for sale with no onward chain. While it is clean and well maintained throughout, it also presents an excellent opportunity for the new owner to update and personalise it to their own style and taste.

Remenham Court is a charming, purpose built development nestled in a quiet cul-de-sac, just 350 yards from Norbiton Station and local shops. With Kingston town centre and the vast greenery of Richmond Park both less than a mile away, it offers the perfect blend of convenience and tranquillity.

Features

- Ground Floor
- Private Entrance
- One Double Bedroom
- Bright And Spacious
- External Storage
- No Onward Chain

Carlisle Close, Kingston Upon Thames, KT2



Total area (approx.): 48.5 sq. m (522.0 sq. ft)