



Gloucester Road, KT1

£375,000

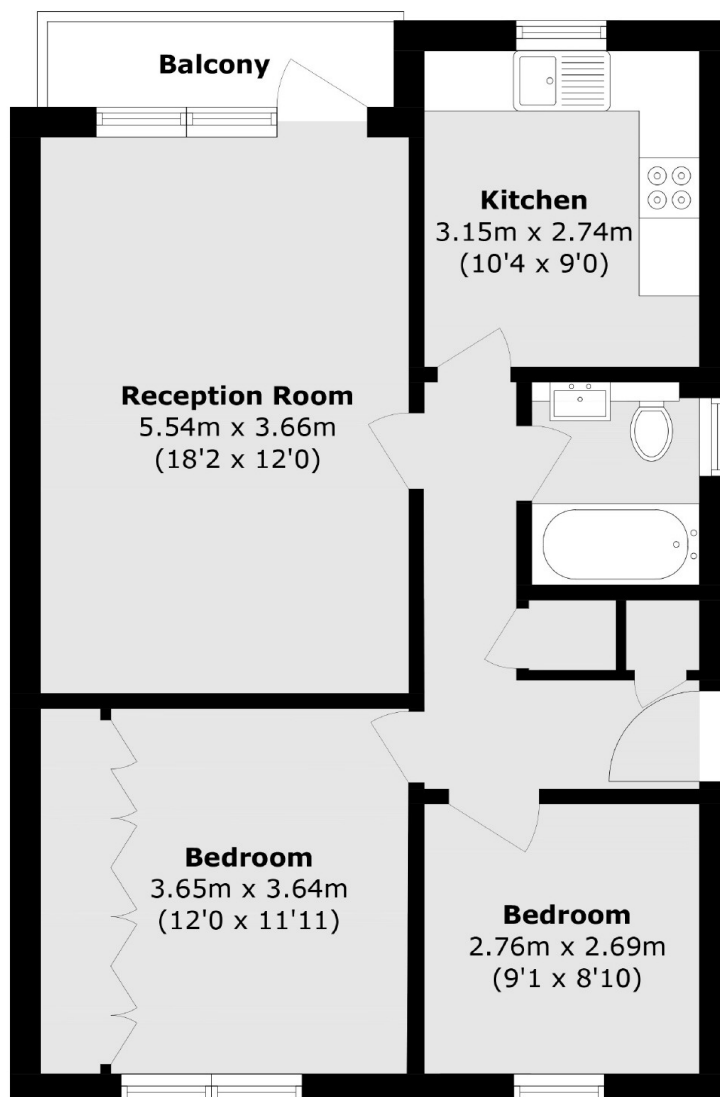
A bright and spacious 2nd floor apartment featuring two double bedrooms, situated in a sought-after development that has recently benefited from extensive upgrades to its communal areas. This well-appointed apartment boasts a large, modern kitchen, a private balcony with stunning panoramic views and the convenience of a lift serving all floors.

Brackendale is a popular block located on Gloucester Road. A great location with easy access to all that Kingston offers. Just a short 350 yard walk to Norbiton Station with Richmond Park half a mile away and Kingston town centre one mile.

Features

- Two Double Bedrooms
- Lounge/Dining Room
- Second Floor
- Lift serviced
- Private Balcony
- Garage

Gloucester Road, Kingston Upon Thames, KT1



Total area (approx.): 63.2 sq. m (680.2 sq. ft)

Balcony area (approx.): 2.9 sq. m (31.2 sq. ft)

Dexters

Kingston
4 Wood Street
Kingston Upon Thames
KT1 1TG

Sales
020 8546 3555

Energy Rating: C. We aim to make our particulars both accurate and reliable. However they are not guaranteed; nor do they form part of an offer or contract. If you require clarification on any points then please contact us, especially if you're traveling some distance to view. Please note that appliances and heating systems have not been tested and therefore no warranties can be given as to their good working order.

 **RICS** | Regulated
Estate Agent
and Letting Agent

dexters.co.uk