



Ullswater Crescent, SW15

£1,395,000

A well presented semi-detached family home offering approximately 2,000 sq ft of accommodation over two floors. The property offers the scope, s.t.p.p, to extend into the loft space, to the front at first floor level and to the rear at ground floor level to create a spectacular home.

Ullswater Crescent is situated within the sought-after Kingston Vale area, close to both Richmond Park and Wimbledon Common. The property falls within the catchment for a choice of private and Ofsted rated Good and Outstanding state schools. Kingston Upon Thames, Putney and Wimbledon Village offer excellent leisure and shopping amenities.

Features

- Five Bedrooms
- Double Reception Room
- Study and Separate Studio
- Kitchen/Dining Room
- Four Bath/Shower Rooms
- Rear Garden & Ample Parking



Ullswater Crescent, SW15

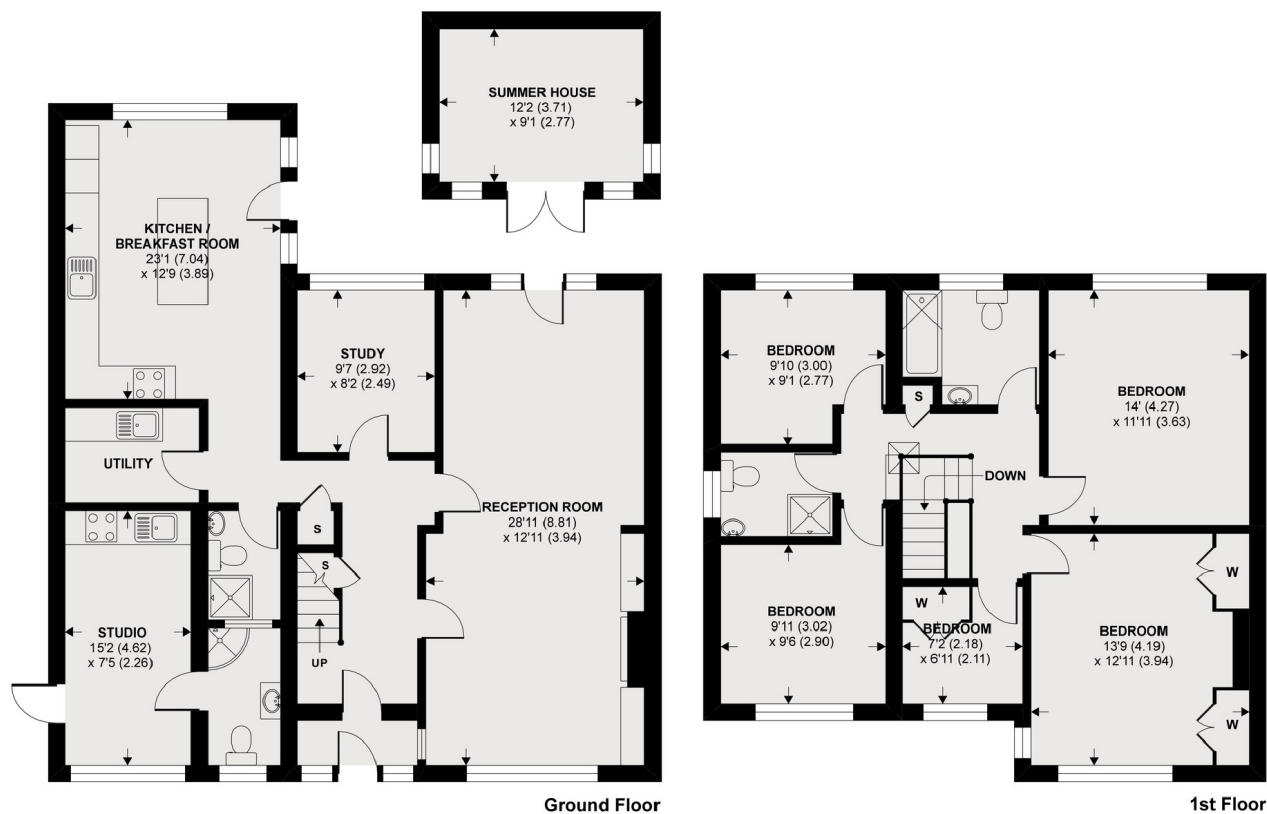
The ground floor accommodation consists of an entrance porch, an entrance hall with storage cupboards and staircase leading to the first floor landing, a double aspect reception room with a feature fireplace with built-in storage cupboards and display shelving with a uPVC double glazed door leading to the rear garden, a study, an extended fitted kitchen/dining room with a uPVC double glazed door leading to the rear garden, a utility room, a shower room and a separate integral studio with its own side access incorporating a fitted kitchenette and ensuite shower room.

The first floor accommodation consists of a large landing with a storage cupboard, a master double bedroom with fitted wardrobes, three further double bedrooms, a single bedroom, a family bathroom and a separate family shower room.

Outside to the front is a garden which is mostly laid to block brick hardstanding providing off street parking for a number of vehicles, rest laid to lawn with flower and shrub borders, a gate provides side access leading to the rear. To the rear is a large secluded garden with areas laid to lawn and patio with mature and established trees and flower and shrub displays with a 111 sq ft wooden summer house.



Ullswater Crescent, London, SW15



APPROX FLOOR AREA 1931 SQ.FT 179.4 SQ.M (EXCLUDES OUTBUILDING & INCLUDES STUDIO)
OUTBUILDINGS APPROX FLOOR AREA 111 SQ.FT 10.3 SQ.M
Copyright nichecom.co.uk 2020 REF : 173921

Dexters

Kingston
4 Wood Street
Kingston Upon Thames
KT1 1TG
Sales
020 8546 3555

Energy Rating: C. We aim to make our particulars both accurate and reliable. However they are not guaranteed; nor do they form part of an offer or contract. If you require clarification on any points then please contact us, especially if you're traveling some distance to view. Please note that appliances and heating systems have not been tested and therefore no warranties can be given as to their good working order.

RICS Regulated
Estate Agent
and Letting Agent

dexters.co.uk