



Royal Quarter, KT2

£350,000

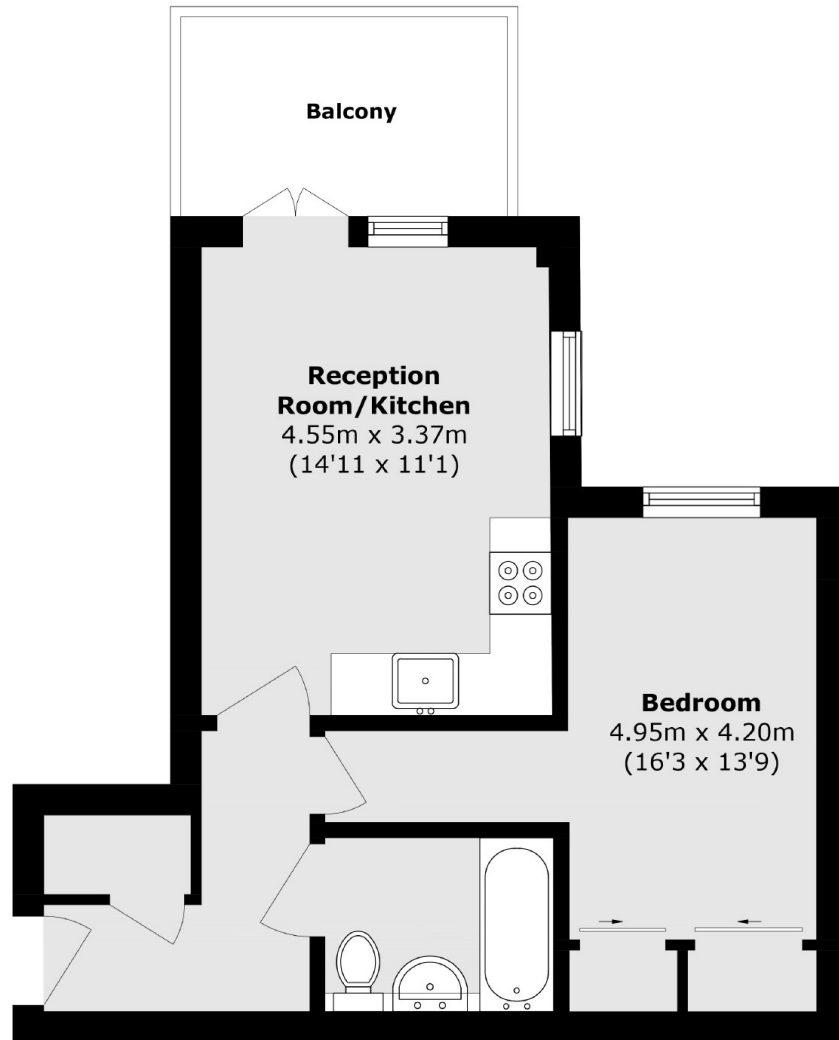
This light and airy apartment is located on the ground floor with a spacious reception room, open plan modern kitchen with integrated appliances and doors opening to the private balcony. There is a double bedroom with a fitted double wardrobe, a spacious fully tiled luxury bathroom, storage cupboard in the entrance hallway and a parking space in the underground car park. The apartment benefits from the Royal Quarter concierge service, residents health suite and gym, landscaped internal gardens and cycle storage.

Royal Quarter is located in central Kingston within close proximity of the Historic Kingston Town Centre, and Kingston's mainline Train Station with frequent trains to London Waterloo.

Features

- Raised Ground Floor
- Gym
- Parking
- Communal Gardens
- Modern Spec
- Concierge Service

Royal Quarter, Kingston Upon Thames, KT2



Total area (approx.): 40.7 sq. m (438.0 sq. ft)

Balcony area (approx.): 6.1 sq. m (65.6 sq. ft)

Dexters

Kingston
4 Wood Street
Kingston Upon Thames
KT1 1TG

Sales
020 8546 3555

Energy Rating: D. We aim to make our particulars both accurate and reliable. However they are not guaranteed; nor do they form part of an offer or contract. If you require clarification on any points then please contact us, especially if you're traveling some distance to view. Please note that appliances and heating systems have not been tested and therefore no warranties can be given as to their good working order.

 **RICS** | Regulated
Estate Agent
and Letting Agent

[dexters.co.uk](https://www.dexters.co.uk)