



## Landseer Road, KT3

### £800,000

With four bedrooms, three bathrooms and a private garden, this house is already set up to be a great family home. The fact that it's currently configured for multiple occupations suggests there's a flexible layout that could be adjusted to suit your needs. If you're thinking about creating the ideal family home, it might be worth focusing on opening up the living areas to make them feel even more spacious and connected, as well as maximising the outdoor space to make the most of the private garden.

Landseer Road is a popular residential road less than half a mile to Manor Park and Malden Manor Station. New Malden High Street is approximately one mile away and the A3 is just a short drive for those wanting vehicle access into and out of London.

### Features

- Four Bedrooms
- Three Bathrooms
- Lovely Private Garden
- Off-Street Parking
- Lots Of Potential
- No Onward Chain





## Landseer Road, KT3

With just under 1,750 sq.ft, this house has plenty of space for a large family. The ground floor is currently set up for multiple occupancy with four rooms and a spacious kitchen/breakfast room. The large space on offer would lend itself perfectly to create a large private reception room to the front of the house, then open up the rear to create a fabulous and very large, open plan dining, living and kitchen area. In addition, there is a small study to the front and a ground floor bathroom.

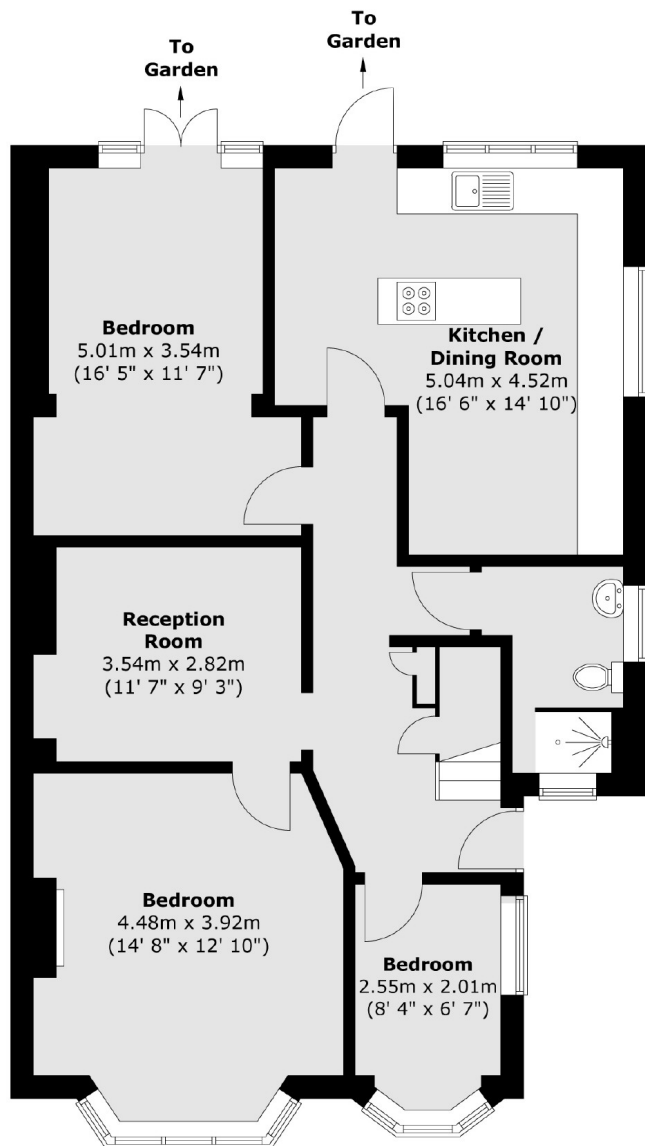
On the first floor are four generous bedrooms and two further bathrooms, one being en suite. There is also access to the loft space.

Outside to the front is a small garden, as well as a driveway to provide off-street parking for multiple cars. To the rear is a lovely garden with lawn and patio areas, well secluded with mature shrubs and trees.

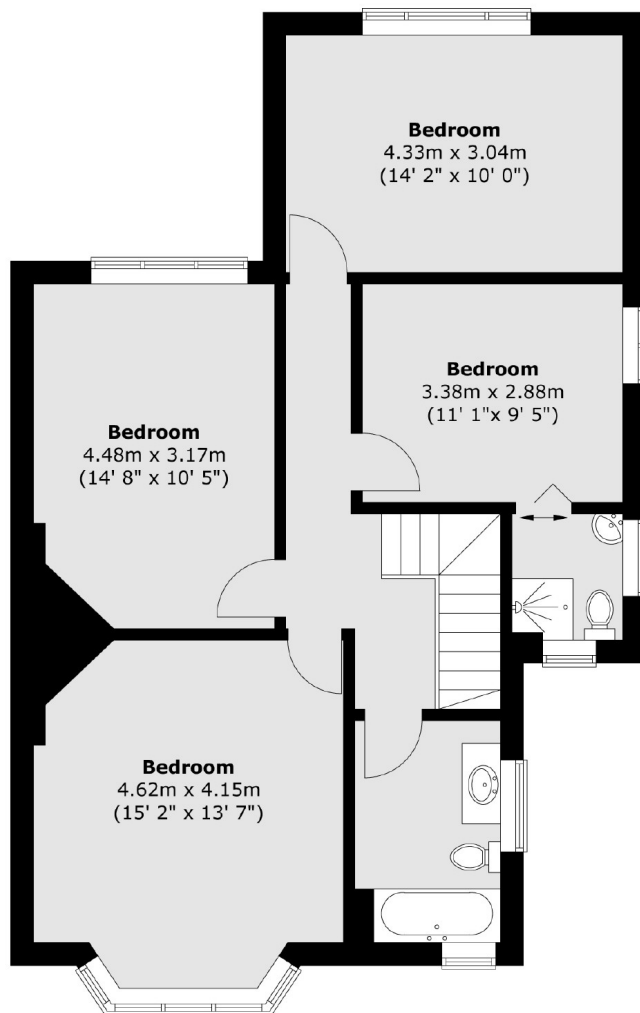




# Landseer Road, New Malden, KT3



**Ground Floor**



**First Floor**

Total area (approx.) : 162.4 sq. m (1748 sq. ft)