



King Henrys Road, KT1

£3,800 PCM

PERFECT FOR STUDENTS OR PROFESSIONAL SHARERS A large end of terraces home perfect for students or sharers. Neutrally decorated throughout the property has a great sized reception room, six double bedrooms, a modern kitchen, two bathrooms, off street parking and garden.

A short walk from Kingston University campus, great transport links and local amenities.

Features

- Large House
- Six Bedrooms
- Close To Amenities
- Private Garden
- Off Street Parking
- Sharers Or Students

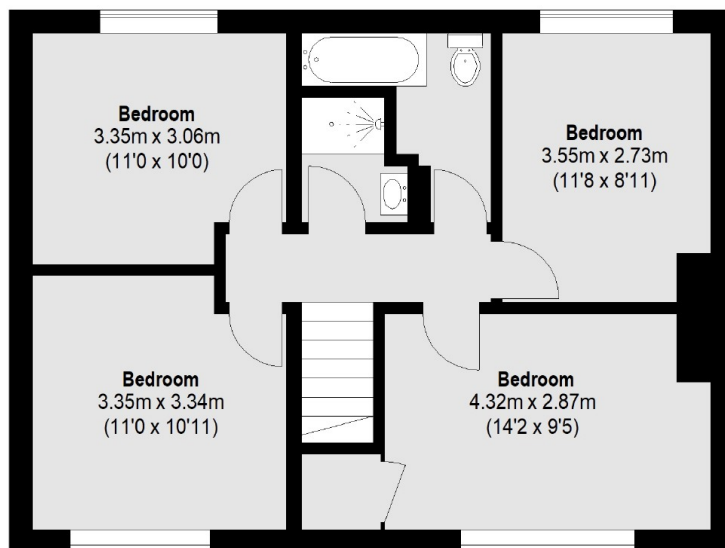


King Henrys Road, KT1

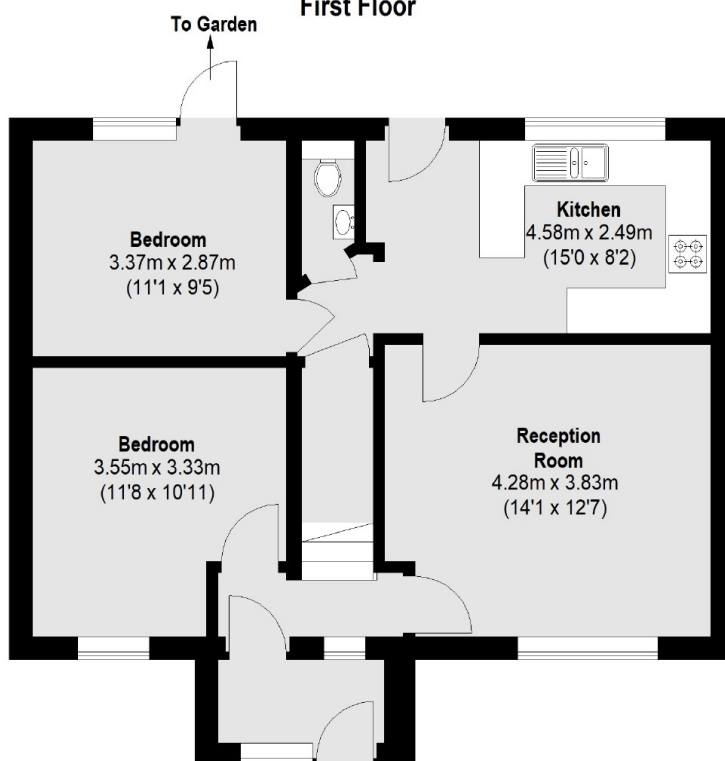
Less than a half mile from Norbiton Station and set on a corner plot is a completely modernised six bedroom semi detached home which offers versatile accommodation. There is one reception room with laminate wood flooring, six double bedrooms, a modern kitchen with appliances, a modern shower room, a modern bathroom and downstairs WC. Outside there is a private rear garden and a gated driveway for off street parking. The property is perfect for students and is furnished to a high standard. Available soon.



King Henrys Road, Kingston Upon Thames, KT1



First Floor



Ground Floor

Total area (approx.): 121.18 sq. m (1304 Sq. ft)