



Mill Street, KT1

£425,000

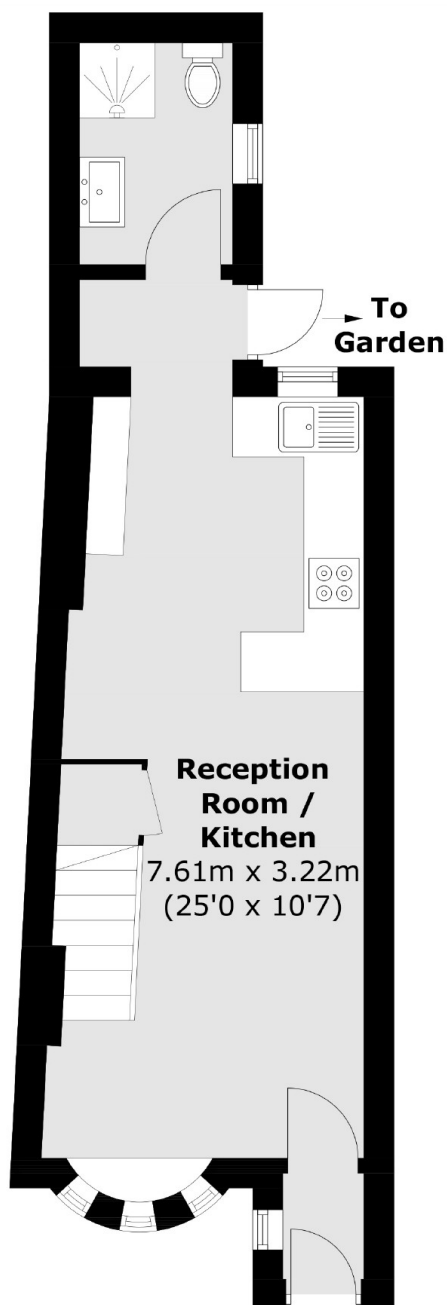
A pretty, two bedroom, Victorian cottage that has recently undergone some refurbishment and is offered with no onward chain. This charming house has two double bedrooms, a spacious living room that is open plan to the large kitchen and bathroom to the rear. In addition, there is a small outside patio garden.

Mill Street is a great location being a quiet cul-de-sac with Fairfield Recreation Park opposite. Kingston town centre is less than 500 yards from Mill Street and the River Thames and Station, just half a mile away. For those seeking a faster line into London, Surbiton Station is just over a mile away.

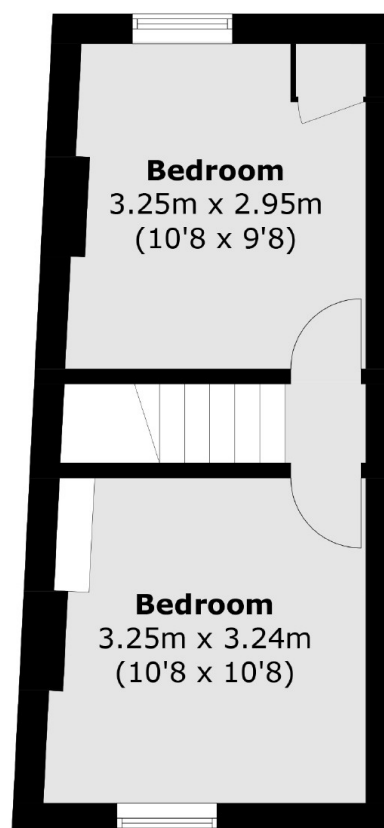
Features

- Two Double Bedrooms
- Victorian Cottage
- No Onward Chain
- Recently Decorated
- Large Open Plan Kitchen
- Fabulous Location

Mill Street, Kingston Upon Thames, KT1



Ground Floor



First Floor

Total area (approx.): 52.7 sq. m (567.1 sq. ft)

Dexters

Kingston
4 Wood Street
Kingston Upon Thames
KT1 1TG
Sales
020 8546 3555

Energy Rating: C. We aim to make our particulars both accurate and reliable. However they are not guaranteed; nor do they form part of an offer or contract. If you require clarification on any points then please contact us, especially if you're traveling some distance to view. Please note that appliances and heating systems have not been tested and therefore no warranties can be given as to their good working order.

 **RICS** | Regulated
Estate Agent
and Letting Agent

[dexters.co.uk](https://www.dexters.co.uk)