

Surbiton Road, KT1

£360,000

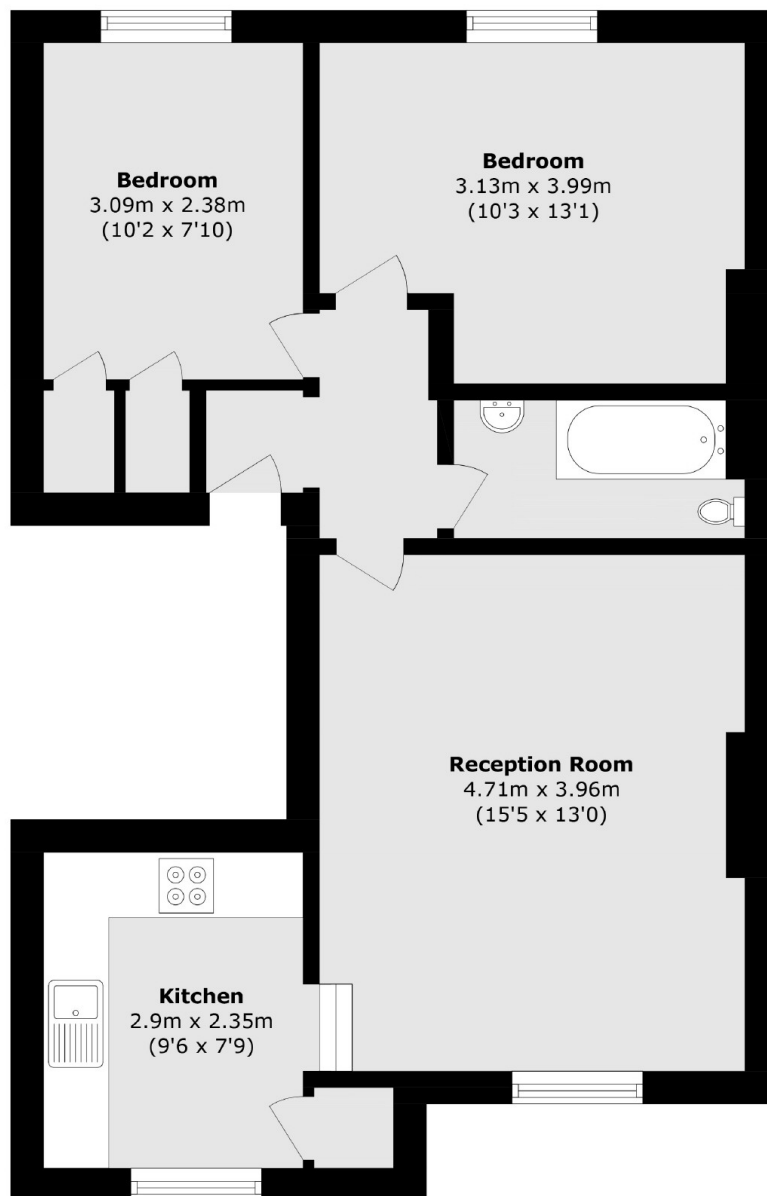
A two double bedroom apartment within this wonderful period building, situated on a desirable river road in between both Kingston and Surbiton town centres. The property has a light and airy reception room with a fireplace, modern kitchen, two double bedrooms and a bathroom. The apartment offers lots of character, including sash windows and has just been recently recarpeted and freshly repainted throughout, offering a fresh and modern look.

Surbiton Road is located just off Portsmouth Road within close proximity of a selection of riverside bars and restaurants, Kingston and Surbiton town centres, Bushy Park and Hampton Court Palace.

Features

- Two Double Bedrooms
- Large Lounge
- Spacious Kitchen
- No Onward Chain
- Recently Refurbished
- Fabulous Location

Surbiton Road, Kingston Upon Thames, KT1



Total area (approx.): 55.2 sq. m (594.1 sq. ft)

Dexters

Kingston
4 Wood Street
Kingston Upon Thames
KT1 1TG

Sales
020 8546 3555

Energy Rating: C. We aim to make our particulars both accurate and reliable. However they are not guaranteed; nor do they form part of an offer or contract. If you require clarification on any points then please contact us, especially if you're traveling some distance to view. Please note that appliances and heating systems have not been tested and therefore no warranties can be given as to their good working order.

 **RICS** | Regulated
Estate Agent
and Letting Agent

dexters.co.uk