



## May Bate Avenue, KT2

£450,000

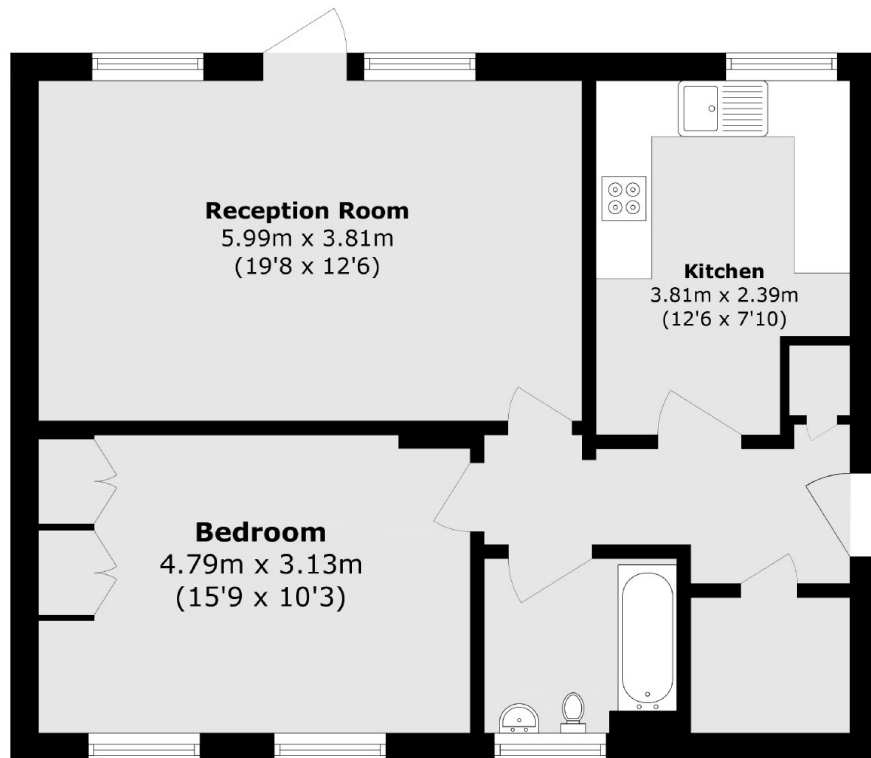
With so few one bedroom apartments available in the development, this is a rare opportunity to purchase a one bedroom, ground floor apartment with its own private entrance as well as direct access onto the private residents garden. With a lovely, bright and larger than average interior, this enviably located apartment is most definitely one to see.

May Bate Avenue is a quiet, gated, riverside residential development, home to a selection of quality apartments and townhouses. This is a prime Kingston location with gates leading onto the River Thames and Canbury Gardens just centrally located, less than 500 yards to Kingston town centre and station.

### Features

- One Double Bedroom
- Ground Floor
- Direct Garden Access
- Private Entrance
- Gated Riverside Development
- Allocated Parking

# May Bate Avenue, Kingston Upon Thames, KT2



Total area (approx.): 61.2 sq. m (658.7 sq. ft)