



Albany Park Road, KT2

£695,000

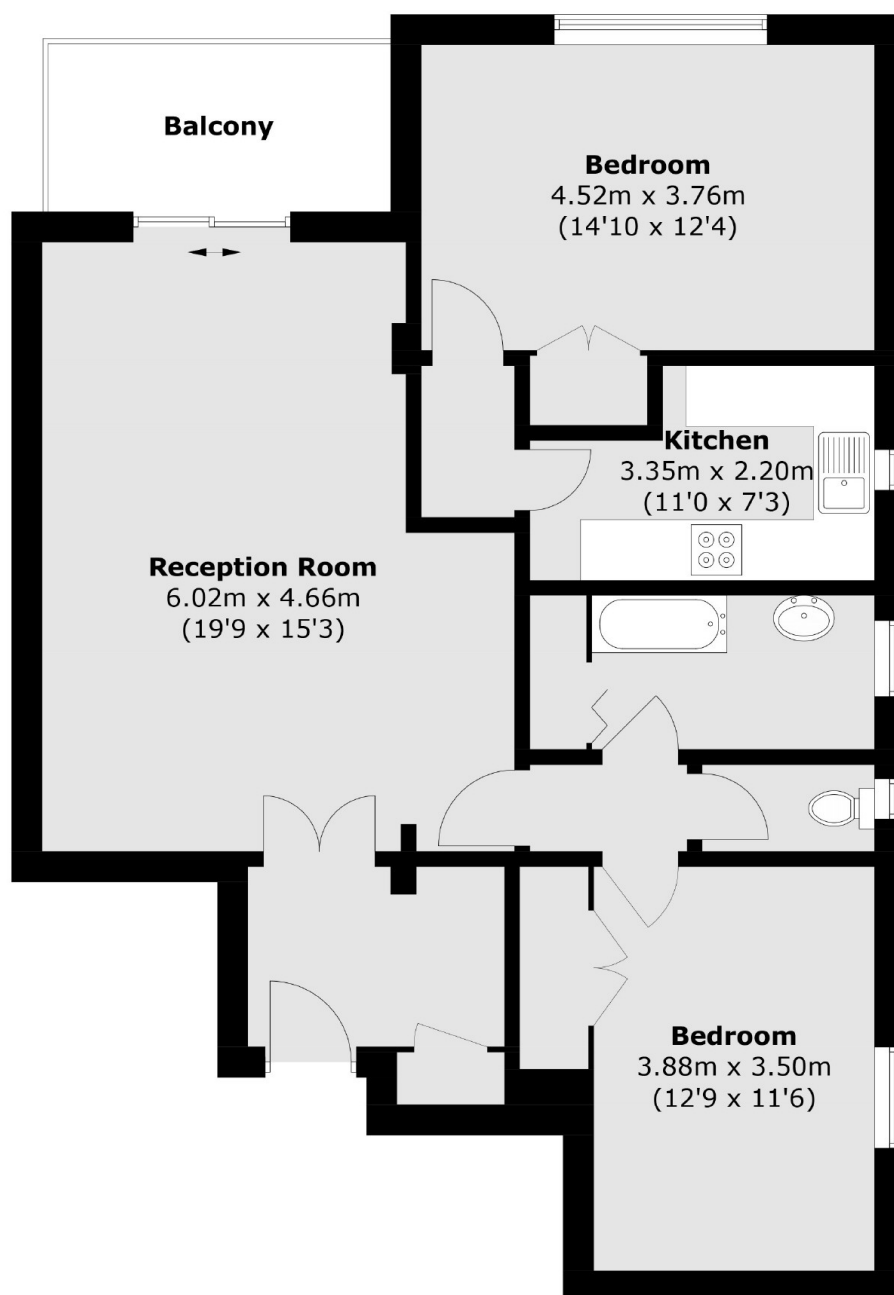
A spacious two double bedroom apartment in this most sought after riverside development. The apartment has fabulous, uninterrupted river views from the living room and has been cleverly designed to offer a river view from every room. The apartment is well presented, although it could benefit from updating to the personal taste of the new owners.

The Albany's is a highly desirable riverside development of three distinctive buildings occupying an unusually large riverside plot with extensive grounds to include a swimming pool. Ideally located just half a mile stroll along the river to Kingston town centre.

Features

- Two Double Bedrooms
- River Fronting
- Excellent Views
- Swimming Pool
- No Onward Chain
- Private Parking

Albany Park Road, Kingston Upon Thames, KT2



Total area (approx.): 77.7 sq. m (836.4 sq. ft)
Balcony: 5.6 sq. m (60.3 sq. ft)

Dexters

Kingston
4 Wood Street
Kingston Upon Thames
KT1 1TG
Sales
020 8546 3555

Energy Rating: C. We aim to make our particulars both accurate and reliable. However they are not guaranteed; nor do they form part of an offer or contract. If you require clarification on any points then please contact us, especially if you're traveling some distance to view. Please note that appliances and heating systems have not been tested and therefore no warranties can be given as to their good working order.

 **RICS** | Regulated
Estate Agent
and Letting Agent

dexters.co.uk