

London Road, KT2

£525,000

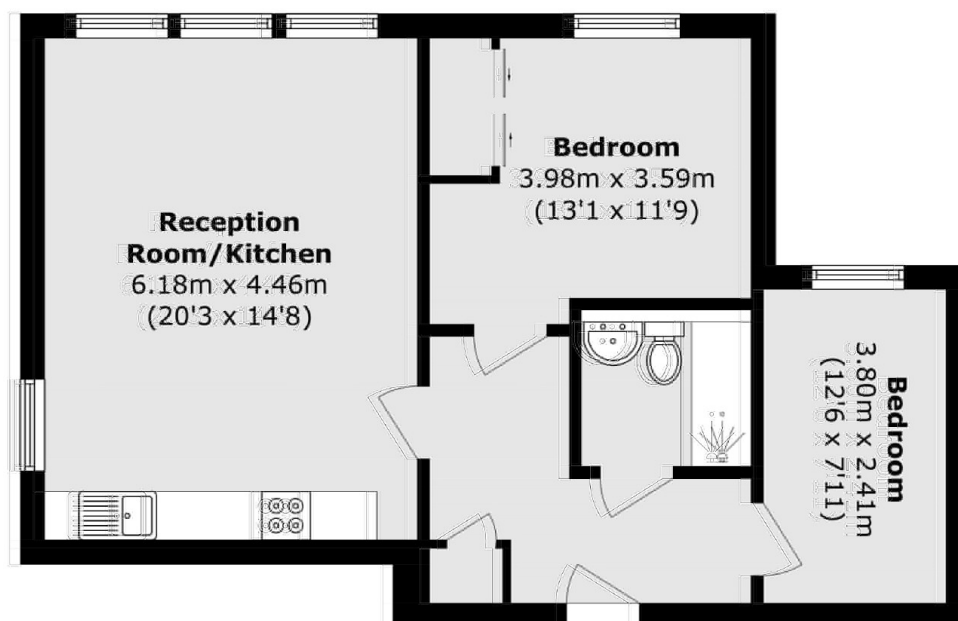
Offered for sale with no onward chain is this immaculate, two double bedroom, ground floor apartment. The current owner has much improved the property and there is a beautiful wood floor throughout. As well as the two double bedrooms, there is a beautiful, bright, open plan lounge, kitchen and dining room, as well as a smart modern bathroom.

Located on London Road, accessed via Albert Road, with the apartment quietly located to the rear. The apartment is just a short 500 yard walk to Kingston town centre and station with the River Thames just half a mile away.

Features

- Ground Floor
- Two Double Bedrooms
- Large Open Plan Lounge
- Immaculate Condition
- No Onward Chain
- Large Roof Terrace

London Road, Kingston Upon Thames, KT2



Total area (approx.): 68.5 sq. m (737.3 sq. ft)