

The Bittoms, KT1

£425,000

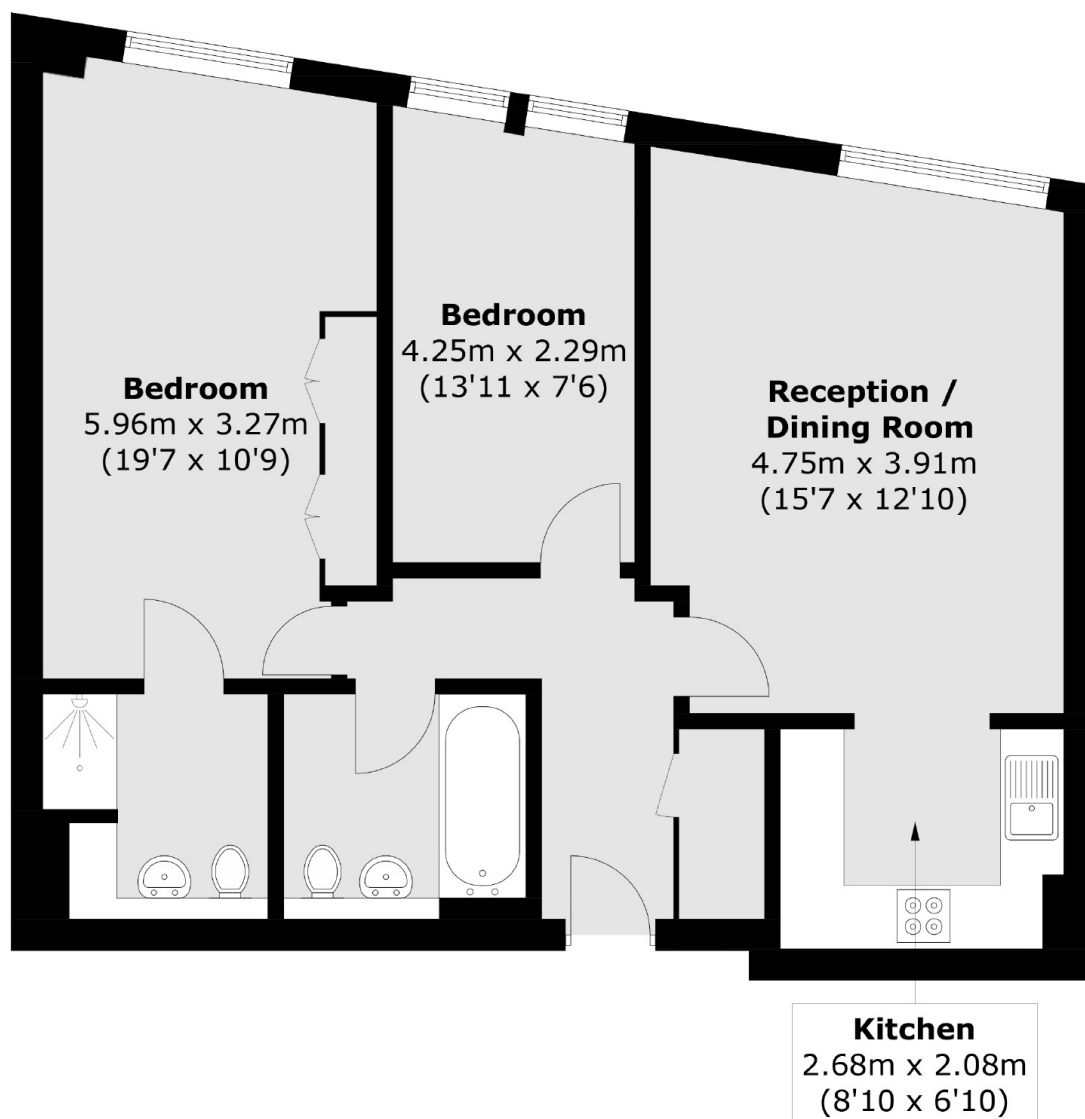
A superb two double bedroom, two bathroom apartment located in a riverside development, moments from the centre of town. This well proportioned flat is on the first floor with allocated parking and no onward chain.

Avante Court is perfectly located minutes away from the town centre as well as the River Thames with its selection of bars, pubs and restaurants. Kingston and Surbiton Stations are also close by.

Features

- Riverside Development
- Two Double Bedrooms
- Two Bathrooms
- Private Allocated Parking
- First floor
- No Onward Chain

The Bittoms, Kingston Upon Thames, KT1



Total area (approx.): 73.0 sq. m (785.8 sq. ft)