



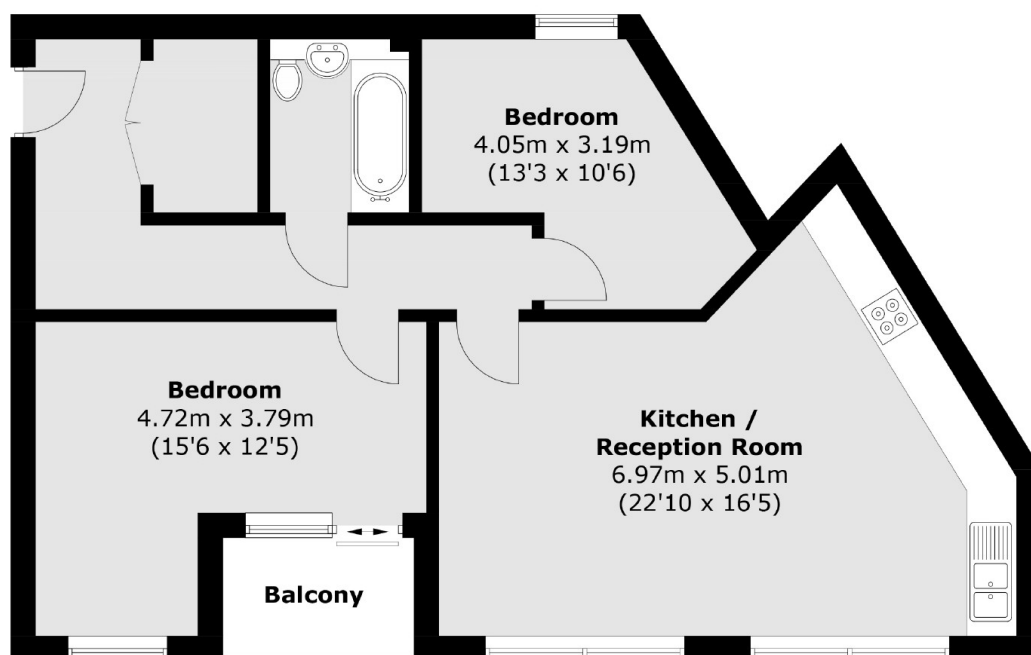
## Coombe Road, KT2

### £415,000

A smart, modern, two double bedroom, Top Floor apartment with a private balcony and perfectly located for local shops and Norbiton Station. The apartment has a lovely, bright and larger than average open plan Lounge/Kitchen/Dining room that offers panoramic views thanks to the elevated, top floor location.

### Features

# Coombe Road, Kingston Upon Thames, KT2



Total area (approx.): 69.6 sq. m (749.2 sq. ft)  
Balcony (approx.): 3.3 sq. m (35.5 sq. ft)