



Birkenhead Avenue, KT2

£375,000

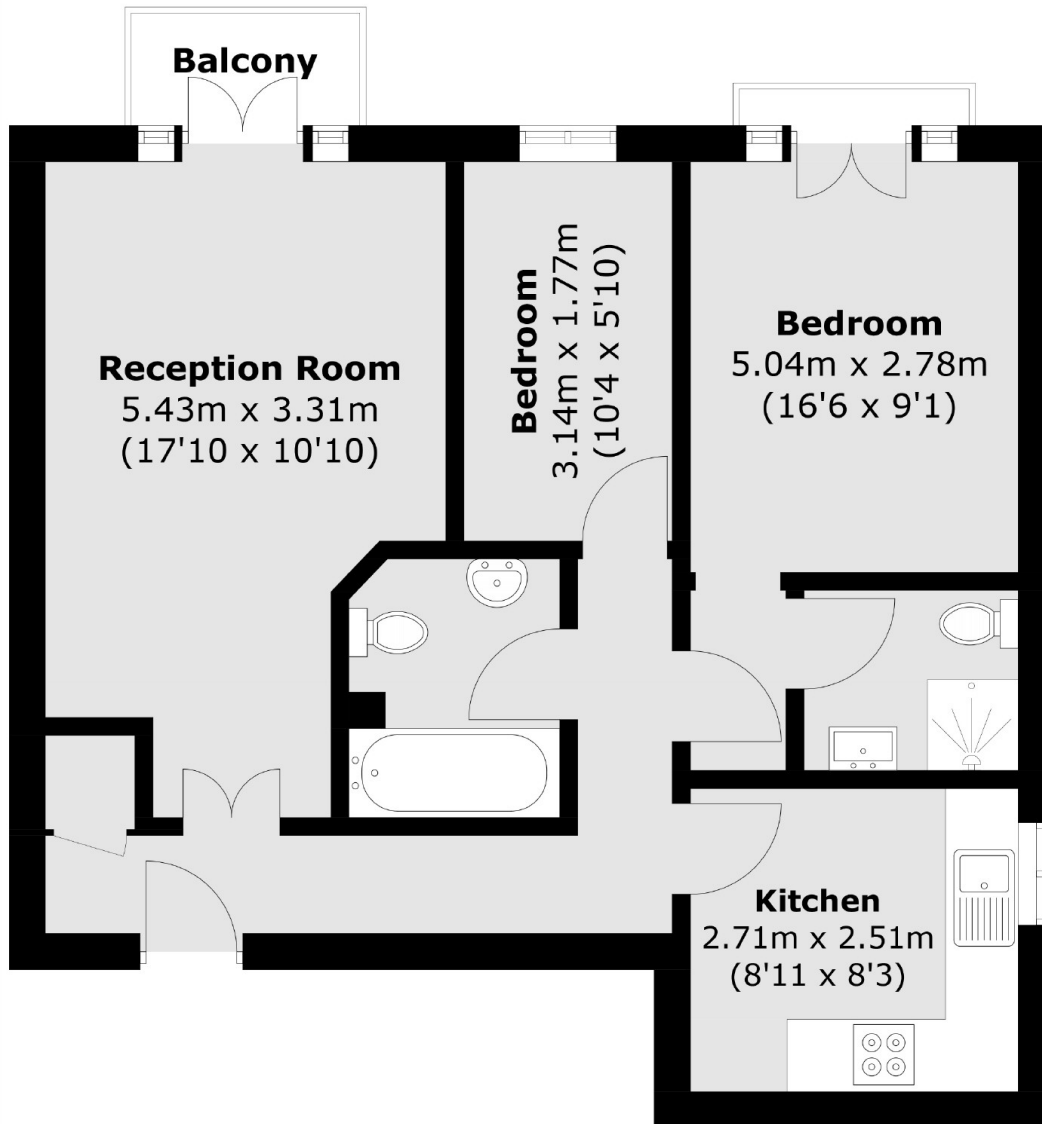
A delightful, two double bedroom apartment located on the top floor of this small and quiet development which is perfectly located just a short stroll to Kingston town centre. The apartment also benefits from two bathrooms, a private balcony and no onward chain, making this an ideal first purchase or rental investment.

Cavendish Court is an attractive development located on Birkenhead Avenue and just 350 yards to Kingston Mainline Station.

Features

- Two Double Bedrooms
- Two Bathrooms
- Spacious Lounge
- Allocated Parking
- Balcony
- No Onward Chain

Birkenhead Avenue, Kingston Upon Thames, KT2



Total area (approx.): 55.3 sq. m (595.2 sq. ft)
Balcony area : 1.7 sq. m (18.3 sq. ft)