



## Brunswick Road, KT2

£3,300 Per calendar month

A superb four bedroom home, with an exceptional living space, eat kitchen and a great size private garden. This substantial property is ideal for a family looking for outstanding school catchment.

Brunswick Road is an attractive residential road in North Kingston, close to Richmond Park and some outstanding primary schools. Norbiton Station is also close by.

### Features

- Period Home
- Four Bedrooms
- Private Garden
- Large Living Space
- North Kingston
- Spacious And Light

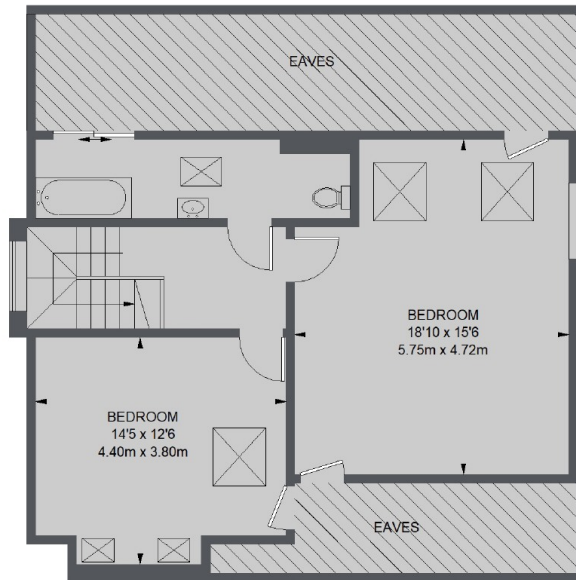


**Brunswick Road, KT2**

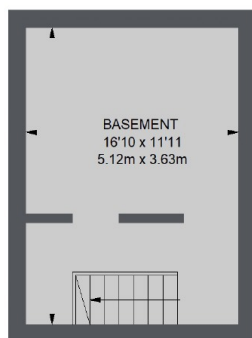




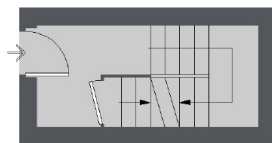
# Brunswick Road, Kingston Upon Thames, KT2



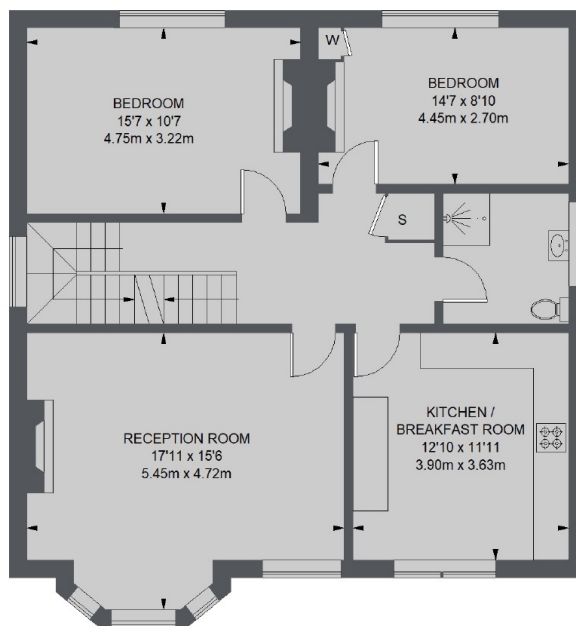
SECOND FLOOR



BASEMENT



GROUND FLOOR



FIRST FLOOR

TOTAL APPROX. FLOOR AREA (EXCLUDING EAVES)  
1838 SQ. FT. (170.8 SQ. M.)