



Crescent Road, KT2

£1,775,000

An impressive semi detached Victorian town house with over 2,000 sq.ft of accommodation, purpose built over three floors. This is a fine example of a period family home, immaculate throughout and a clever blend of Victorian charm and modern living.

Crescent Road is one of North Kingstons premier roads and just 500 years to the gates of Richmond Park and less than a mile to the River Thames and Kingston Town Centre. For those needing access to rail then Norbiton Station is less than half a mile away.

Features

- Victorian Town House
- Four/Five Bedrooms
- Two/Three Reception Rooms
- Utility/Breakfast Room
- 100 Foot Secluded Garden
- Two Bathrooms & Separate WC



Crescent Road, KT2

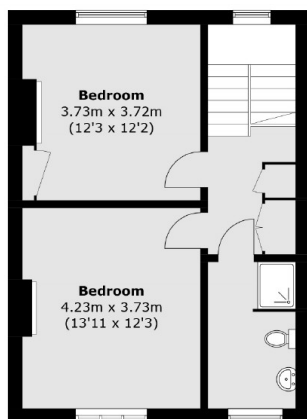
As you enter the house there is an immediate grasp of the unique charm and character that has been retained with a wealth of period features that will continue throughout the house. These include numerous fireplaces, sash windows, wooden flooring and corniced ceilings. The ground floor has a large open plan reception room with sash windows to the front and large french doors to the rear flooding the area with light. There is also a good sized kitchen leading to the utility/breakfast room and a ground floor WC.

The 1st floor is currently set up with two double bedrooms, a bathroom and a large sitting room which could easily be utilised as a double bedroom if required. The second floor is home to two further double bedrooms and a bathroom.

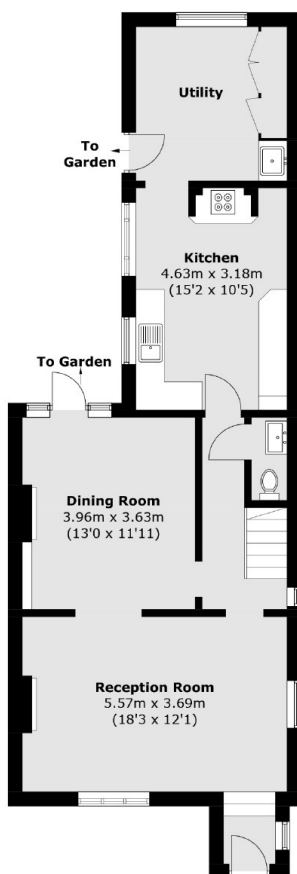
Outside to the front is a pretty garden leading to the impressive entrance and side access. The garden is another wonderful feature of the house as there is a beautiful 100ft secluded garden with a large lawn, mature shrub borders, fruit trees and a pretty summer house with power and light. There is also the added bonus of extension potential subject to the usual permissions.



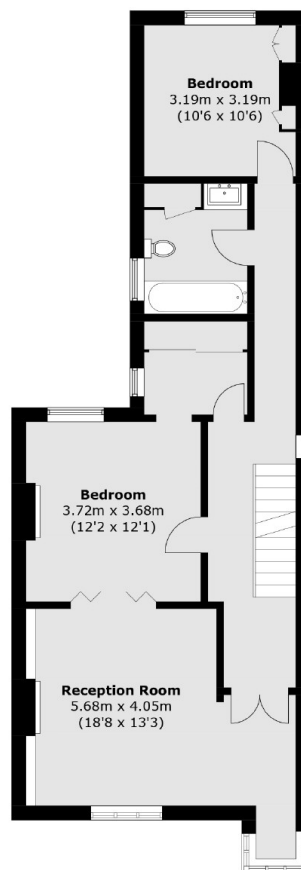
Crescent Road, Kingston Upon Thames, KT2



Second Floor



Ground Floor



First Floor

Total area (approx.): 192.2 sq. m (2,068.8 sq. ft)