



Gloucester Road, KT1

£399,950

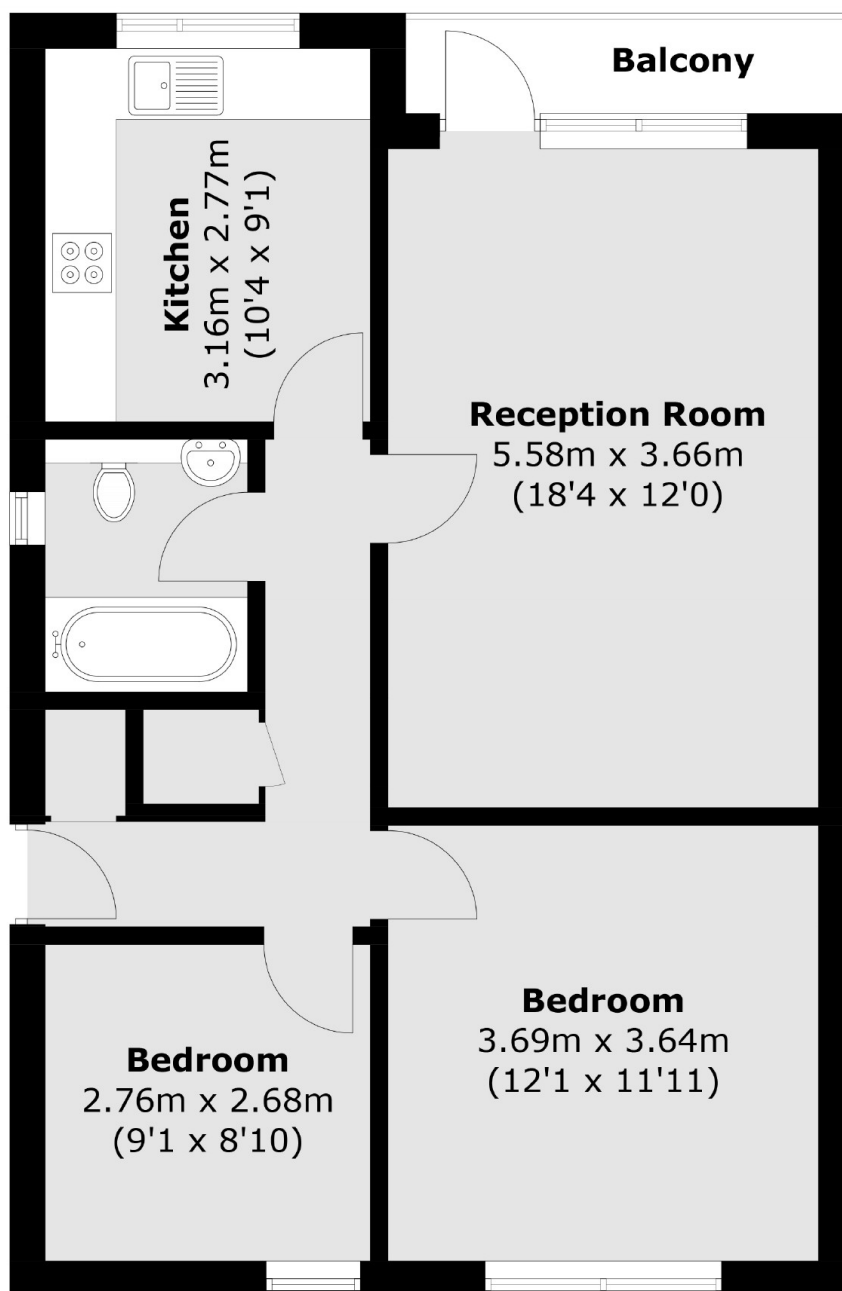
A beautifully finished, bright and spacious two double bedroom apartment located on the top floor of this sought after development that has recently undergone several improvements to the communal areas and benefits from a lift service to each floor. As well as the double bedrooms, there is a large kitchen and private balcony with lovely far reaching views.

Brackendale is a popular block located on Gloucester Road. A great location within easy access to all that Kingston offers. Just a short 350 yard walk to Norbiton Station with Richmond Park half a mile away and Kingston town centre 1 mile.

Features

- Two Double Bedrooms
- Lounge/Dining Room
- Top Floor
- Lift serviced
- Private Balcony
- Garage

Gloucester Road, Kingston Upon Thames, KT1



Total area (approx.): 64.2 sq. m (691.0 sq. ft)
Balcony : 3.0 sq. m (32.3 sq. ft)