



The Triangle, KT1

£345,000

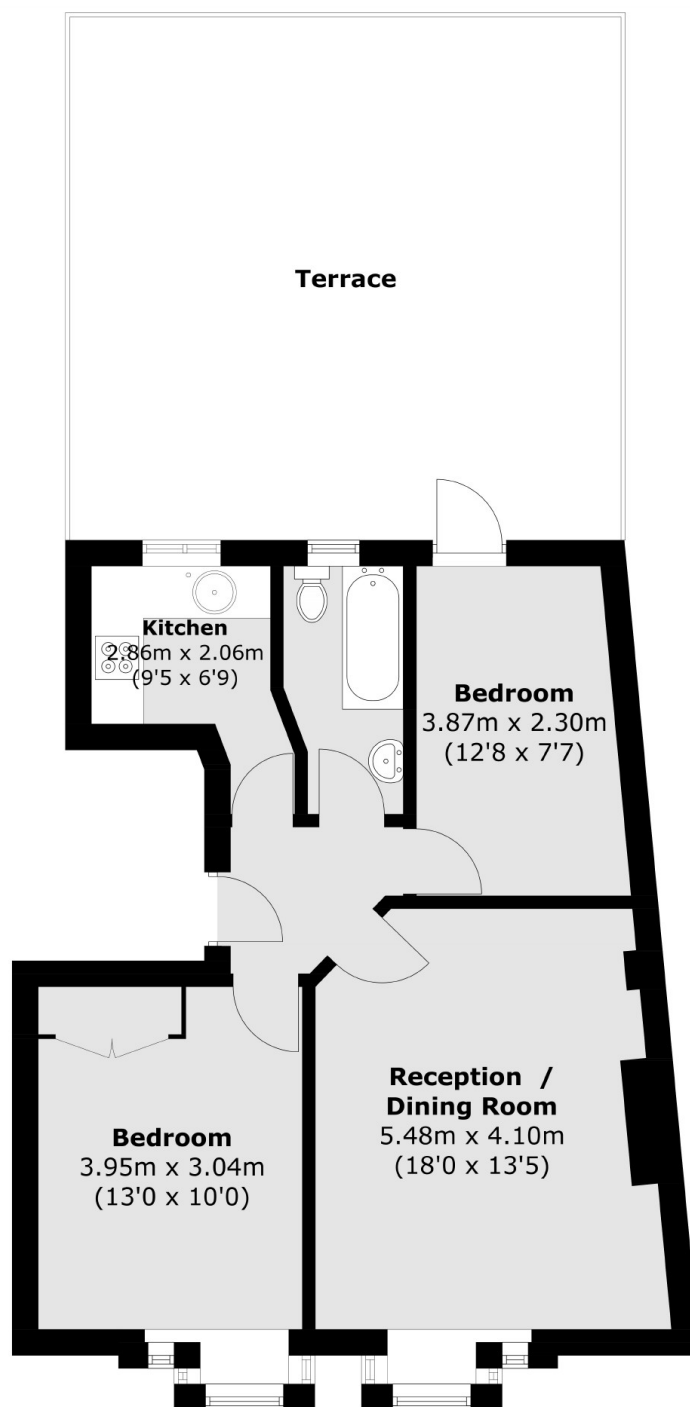
A rare opportunity to purchase a two bedroom flat with the unusual benefit of having a large private decked roof garden. The flat has two good sized bedrooms, a spacious lounge and a smart, modern kitchen but the outside space is the unique feature that will be sure to spark lots of interest.

Located on The Triangle, a popular location in Kingston but equidistant to New Malden. Local shops and restaurants are on your doorstep and a pretty local park is just a short stroll away.

Features

- Two Bedrooms
- Large Private Roof Garden
- No Onward Chain
- Convenient Location
- Large Lounge
- Modern Kitchen

The Triangle, Kingston Upon Thames, KT1



Total area (approx.): 53.0 sq. m (570.5 sq. ft)
Terrace area (approx.): 38.3 sq. m (412.2 sq. ft)