



Birkenhead Avenue, KT2

£405,000

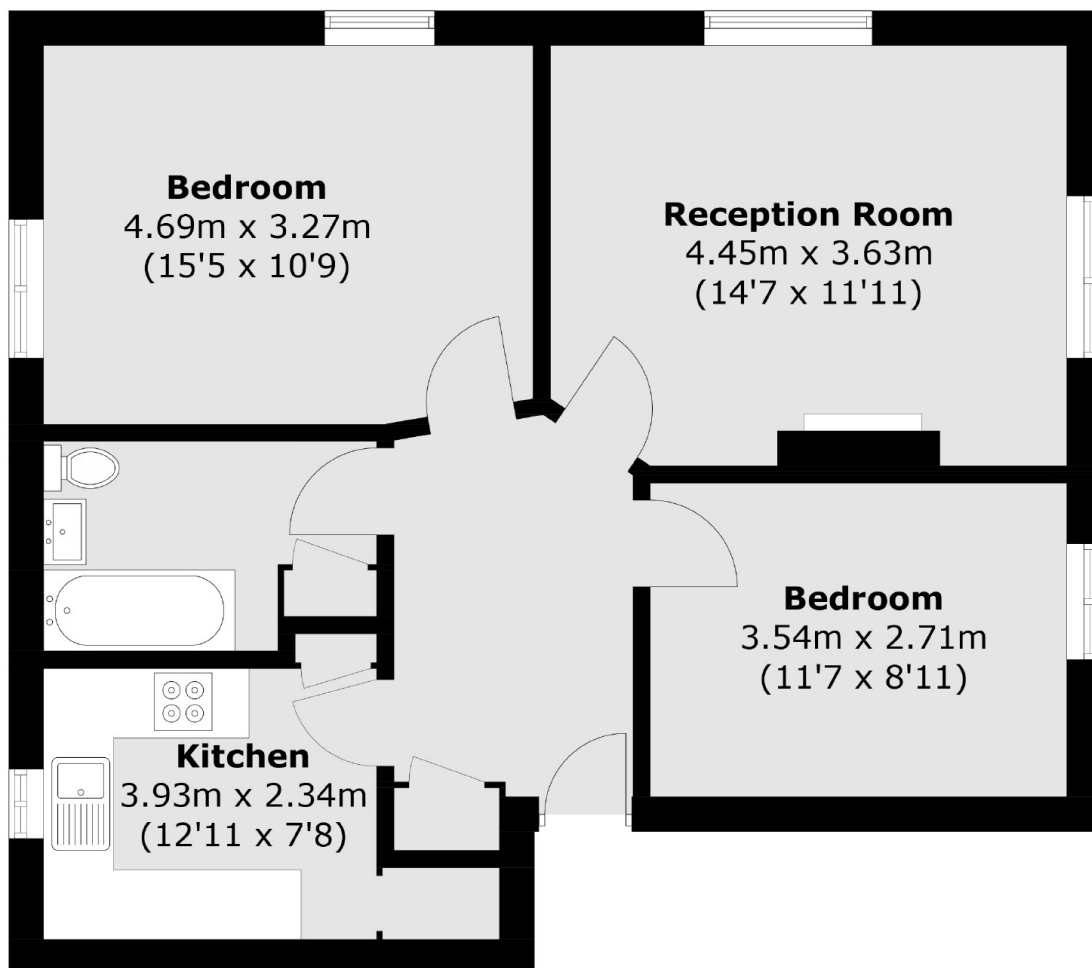
A bright and spacious, two double bedroom, first floor apartment located in this popular landmark development, ideally placed to enjoy all the benefits and attractions Kingston has to offer.

Norbiton Hall is a well recognised and popular development located on Birkenhead Avenue. The location is superb being less than 200 yards to both Asda and Lidl with Norbiton and Kingston Stations less than half a mile away.

Features

- First Floor
- Two Double Bedrooms
- Excellent Location
- Residents Parking
- Double Aspect Lounge
- Popular Development

Birkenhead Avenue, Kingston Upon Thames, KT2



Total area (approx.): 62.2 sq. m (669.5 sq. ft)