



## London Road, KT2

£299,950

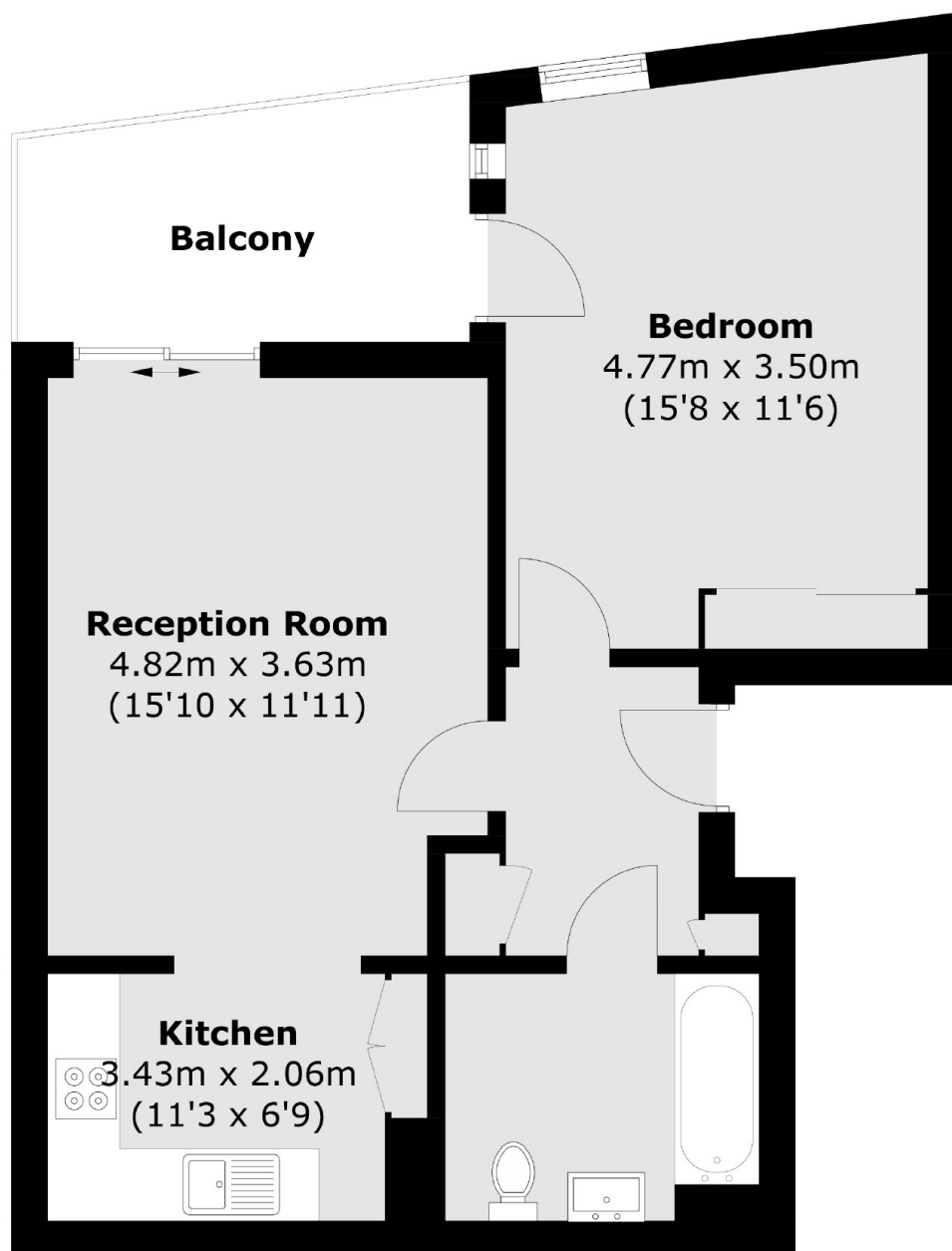
A delightful one bedroom apartment located on the third floor of this lift serviced, small development. With a larger than average double bedroom, a private balcony and no onward chain, this centrally located apartment is definitely one not to be missed.

Located on London Road, this is about as convenient as it gets with Norbiton Station just 350 yards away or a short half a mile stroll to Kingston town centre and Station. In addition, this well placed apartment has an abundance of local shops and two large supermarkets just across the road.

### Features

- One Double Bedroom
- Private Balcony
- Spacious Lounge
- Lift Service
- No Onward Chain
- Great Location

# London Road, Kingston Upon Thames, KT2



Total area (approx.): 52.5 sq. m (565.1 sq. ft)  
Balcony: 7.2 sq. m (77.5 sq. ft)