



## Wilmer Crescent, KT2

### £400,000

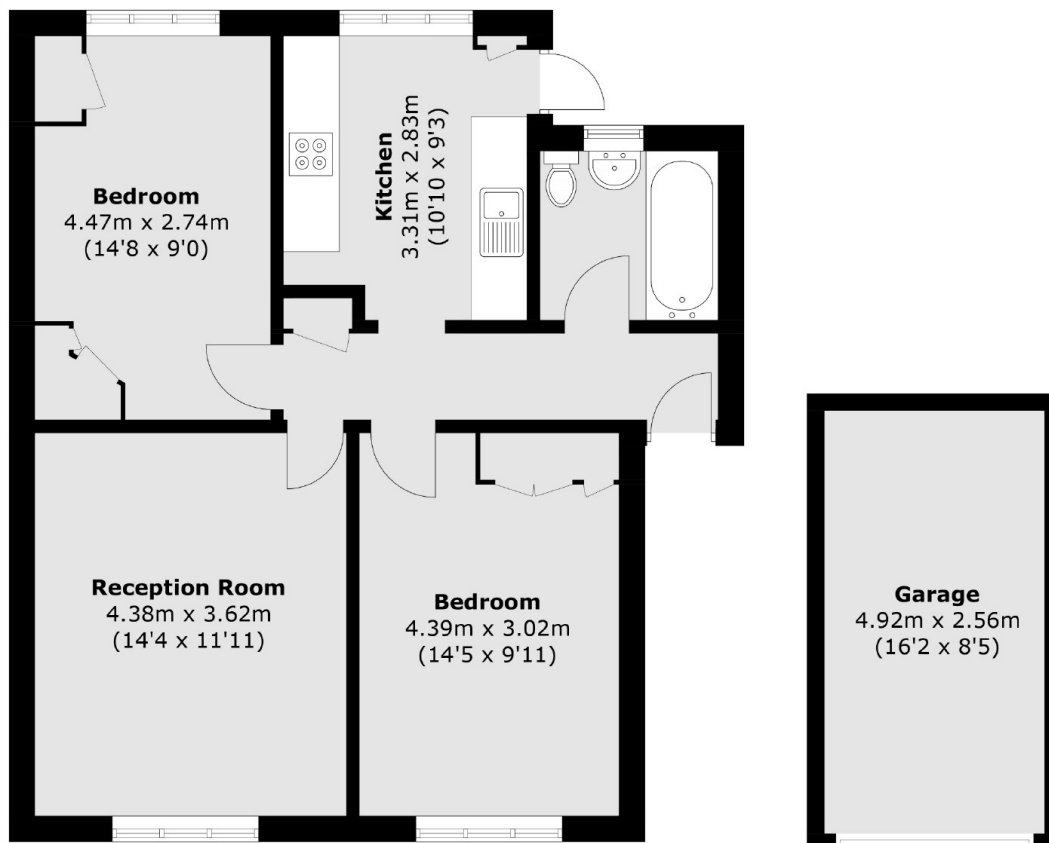
A spacious two double bedroom ground floor apartment with the rare benefit of a large private garden and garage. As well as the spacious bedrooms, there is a generous living room, large bathroom and a kitchen with plenty of space for a dining table to enjoy breakfast and dinner overlooking the garden.

Wilmer Crescent is a quiet, private road that backs onto Richmond Park. Ideally located to access the very best of the area, less than a mile to the River Thames, Ham Parade, local shops, the vibrant Kingston town centre and both Norbiton and Kingston's mainline station.

### Features

- Two Double Bedrooms
- Private Garden
- Garage
- No Onward Chain
- Close To Richmond Park
- Residents Parking

# Wilmer Crescent, Kingston Upon Thames, KT2



(Not Shown In Actual  
Location / Orientation)

Total area (approx.): 64.0 sq. m (688.9 sq. ft)  
Garage : 12.5 sq. m (134.5 sq. ft)