



Jerome Place, KT1

£3,075 Per calendar month

A luxurious two bedroom, two bathroom Penthouse Apartment in the heart of Kingston Upon Thames. The property has been finished to a high standard throughout and has extensive river views.

Situated in heart of all of the action. A stones throw away from local bars restaurants and Kingston Town Centre. Enjoy the scenery while taking long walks along the River Thames.

Features

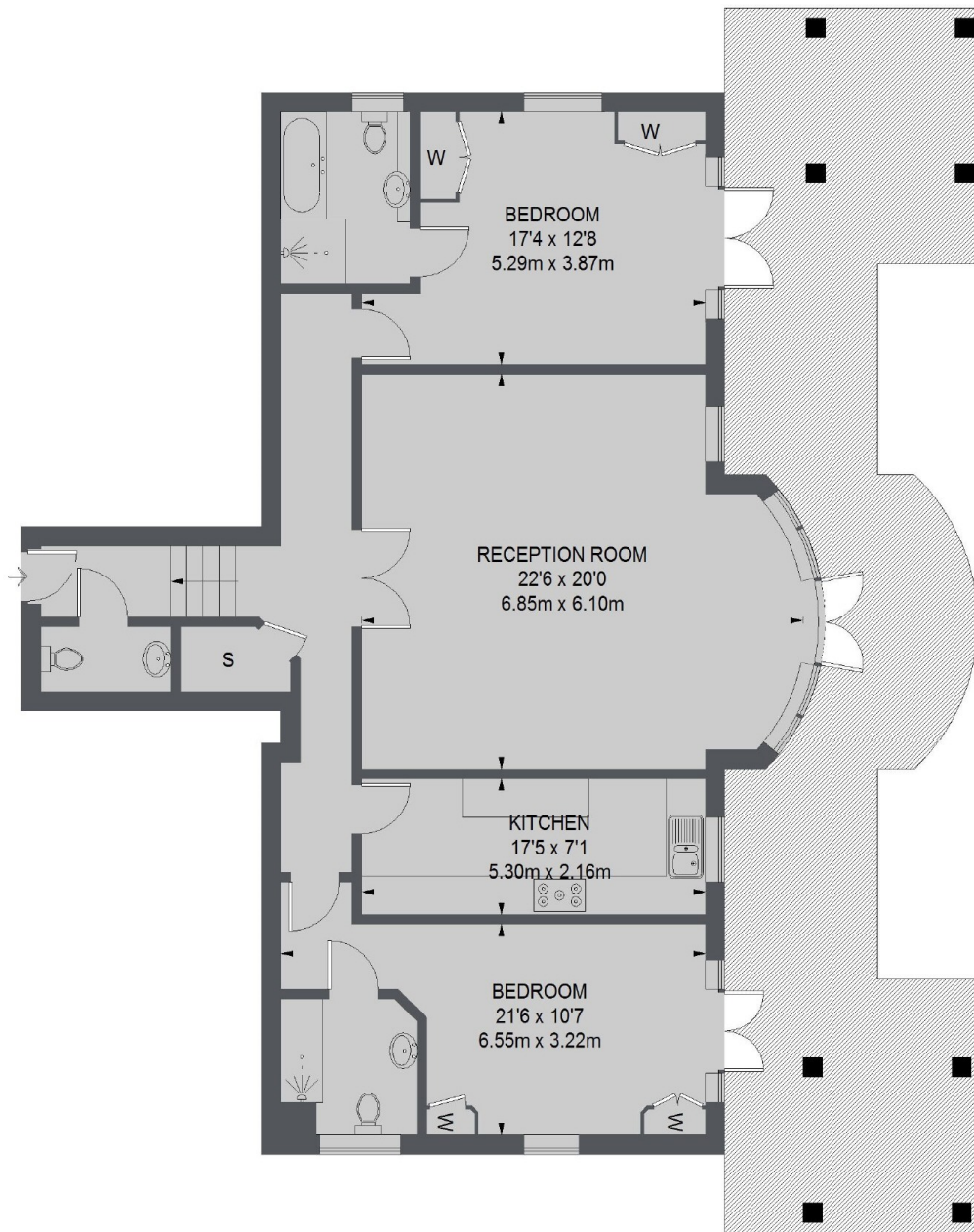
- Two Bedrooms
- Private Parking
- Stunning River Views
- Spacious Reception Room
- Penthouse Apartment
- Two Bathrooms



Jerome Place, KT1



Jerome Place,
Kingston Upon Thames, KT1



TOTAL APPROX. FLOOR AREA
1267 SQ. FT. (117.68 SQ. M.)