

Skerne Road, KT2

£530,000

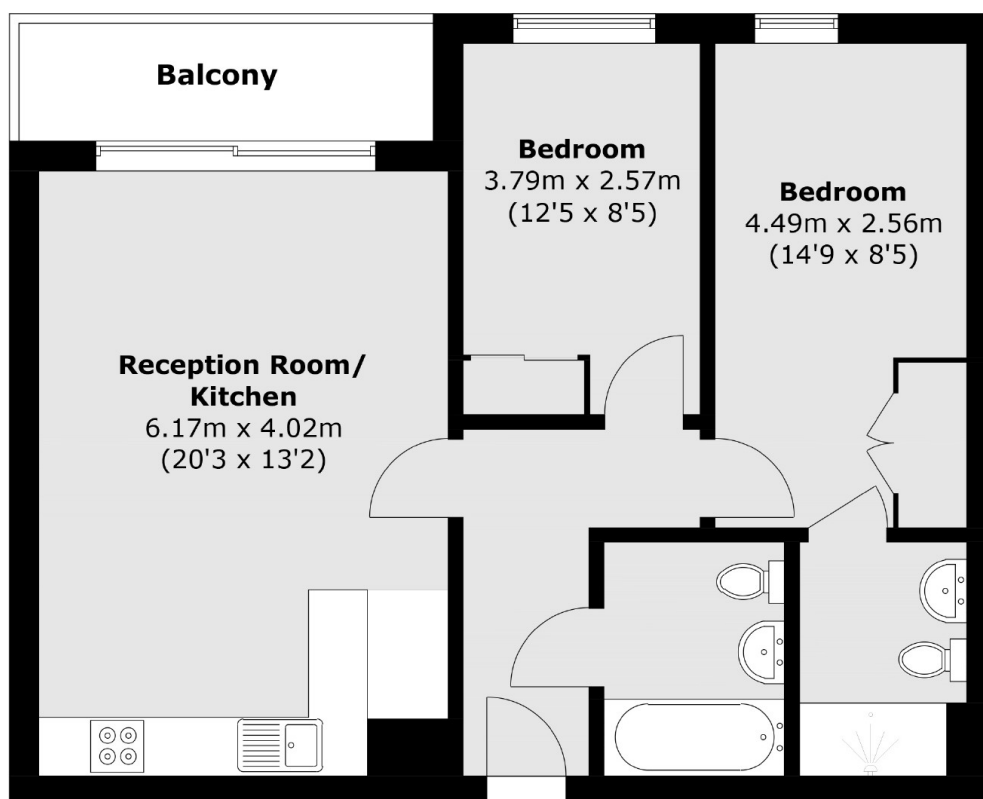
A smart two double bedroom, two bathroom apartment located on the sixth floor of this prestigious riverside development. There is a large open plan kitchen/reception room with doors that open onto the private balcony that overlooks the rooftop garden and has views to the River Thames.

The Maritime Building forms part of the prestigious River Walk Development, a quiet riverside residential area. Ideally located and less than 200 yards to the River Thames, Kingston town centre and mainline station.

Features

- Two Double Bedrooms
- Open Plan Lounge/Kitchen
- Two Bathrooms
- Private Balcony
- Lift Service
- Residents Roof Garden

Skerne Road, Kingston Upon Thames, KT2



Total area (approx.): 65.0 sq. m (699.6 sq. ft)

Balcony area (approx.): 5.0 sq. m (53.8 sq. ft)