



Bishops Hall, KT1

£425,000

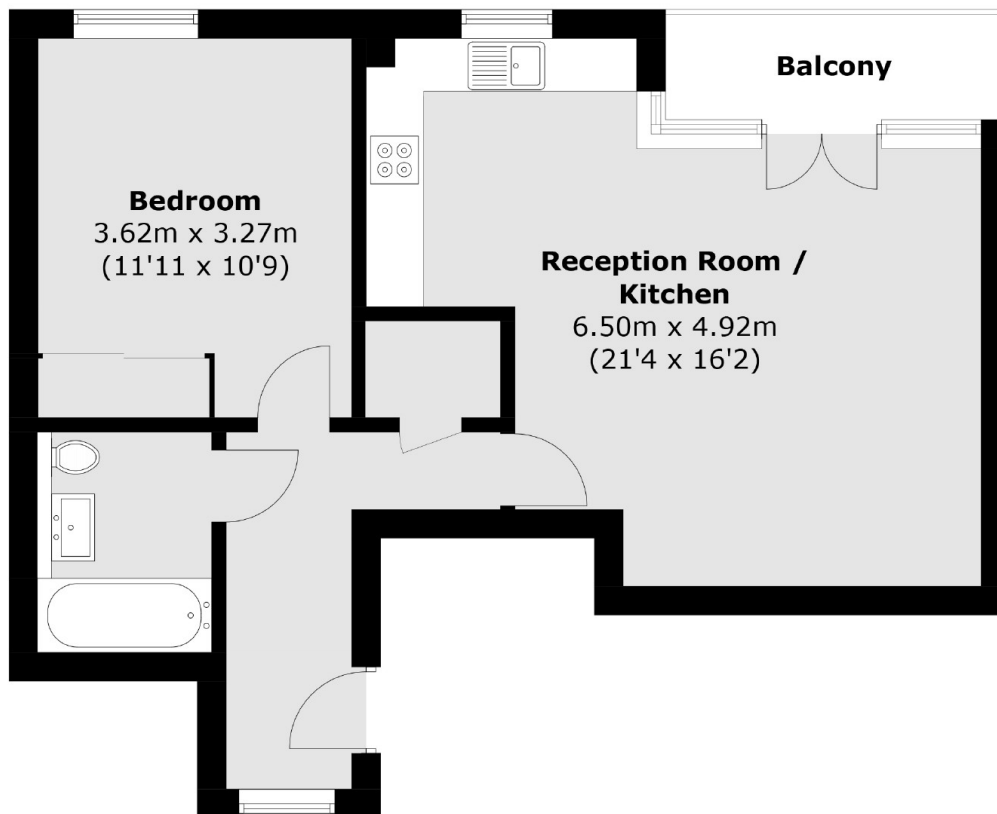
A stunning one bedroom apartment situated between Kingston's historic Market Place and the River Thames. These apartments were occupied in 2021 and this extremely desirable development is perfectly placed within walking distance of everything Kingston has to offer. Internally, the apartment has been finished to a very high standard and benefits from smart, contemporary fitted wardrobes in the bedroom and a private balcony off the living room.

Bodman House couldn't be better located, you are situated just moments from the River Thames and the historic Market Place with John Lewis, local stores, bars and riverside restaurants all within 100 yards of the apartment.

Features

- Central Location
- Excellent Quality
- Bright And Spacious
- Lift Service
- Private Balcony
- Riverside Development

Bishops Hall, Kingston Upon Thames, KT1



Total area (approx.): 54.3 sq. m (584.5 sq. ft)
Balcony: 3.9 sq. m (42.0 sq. ft)