



Warbank Lane, KT2

£1,125,000

With over 2,200 sq.ft of accommodation, this is a larger than average, five bedroom, detached, Chalet style family home located in a quiet cul-de-sac in Coombe. The house has been extended to the ground floor and this flexible, versatile and well proportioned house is arranged is over three generous floors.

Warbank Lane is a quiet residential cul-de-sac just off Coombe Lane West and with easy access to the A3. The area is well served by an excellent choice of schools, both State and Private, for children of all ages and recreational facilities are also in good supply. The wonderful open spaces of both Wimbledon Common and Richmond Park are just a short distance away.

Features

- Five Bedrooms
- Three Bathrooms
- Garage And Parking
- Large Open Plan Reception
- Detached
- No Onward Chain



Warbank Lane, KT2

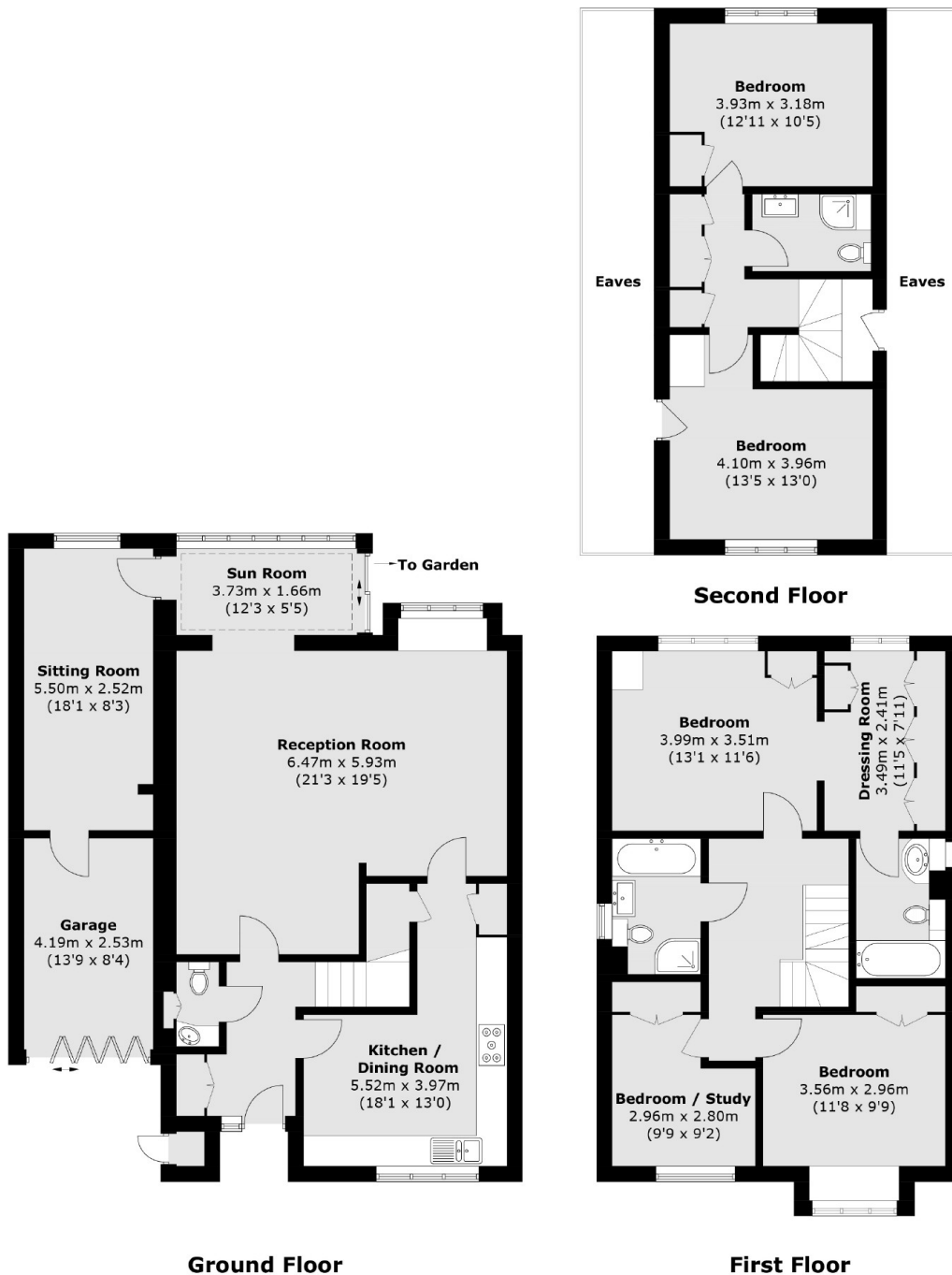
The ground floor has a wonderful layout with generous open plan areas, perfect for entertaining. To the front is the modern kitchen with ample space for a dining table. To the rear is the fabulous main reception/entertaining area open plan to the dining room and sunny conservatory. In addition, the family room is a great space for children or a super home office for those working from home. There is also access to the attached garage and a ground floor WC.

On the first floor is the principal double bedroom with a dressing area and en suite bathroom. There are two further bedrooms, one a double and the other a good sized single, currently being utilised as a home office. On the top floor are two further double bedrooms and an additional bathroom.

Outside to the front is a neat garden with a driveway to the side that provides off-street parking as well as access to the attached garage. To the rear is the well secluded and easily maintained private garden.



Warbank Lane, Kingston Upon Thames, KT2



Total area (approx.): 207.1 sq. m (2,229.2 sq. ft)
(Excluding Eaves & External Cupboard)